

Elab Bright™ Violet 650 Anti-Human/Mouse CD44 Antibody[IM7]

Catalog Number: E-AB-F1100U

Note: Centrifuge before opening to ensure complete recovery of vial contents.

Description

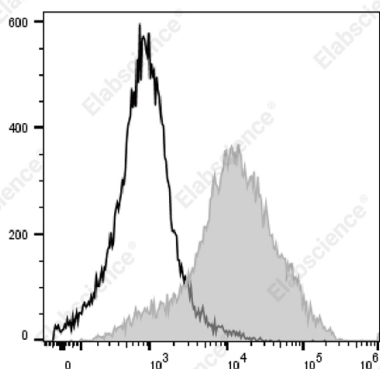
Reactivity	Human;Mouse
Host	Rat
Isotype	Rat IgG2b, κ
Clone No.	CD44
Isotype Control	Elab Bright™ Violet 650 Rat IgG2b, κ Isotype Control[R35-38] [Product AN00821U]
Conjugation	Elab Bright™ Violet 650
Conjugation Information	Elab Bright Violet 650 is designed to be excited by the violet laser (405 nm) and detected using an optical filter centered near 650 nm (e.g., a 660/20 nm bandpass filter).
Storage Buffer	Phosphate buffered solution, pH 7.2, containing 0.09% stabilizer and 1% protein protectant.

Applications

Recommended usage

FCM	Each lot of this antibody is quality control tested by flow cytometric analysis. The amount of the reagent is suggested to be used 5 μL of antibody per test (million cells in 100 μL staining volume or per 100 μL of whole blood). Please check your vial before the experiment. Since applications vary, the appropriate dilutions must be determined for individual use.
-----	---

Data



C57BL/6 murine splenocytes are stained with Elab Bright Violet 650 Anti-Human/Mouse CD44[IM7] Antibody (filled gray histogram). Unstained splenocytes (empty black histogram) are used as control.

Preparation & Storage

Storage	Keep as concentrated solution. This product can be stored at 2-8°C for 12 months. Please protected from prolonged exposure to light and do not freeze.
Shipping	Ice bag

Antigen Information

Alternate Names	CD44 antigen;CD44;CDw44;Epican;Phagocytic glycoprotein 1;PGP-1;Phagocytic glycoprotein I;PGP-I;CD44;LHR; MDU2; MDU3; MIC4
Uniprot ID	P15379;P16070

For Research Use Only

Toll-free: 1-888-852-8623
Web: www.elabscience.com

Tel: 1-832-243-6086
Email: techsupport@elabscience.com

Fax: 1-832-243-6017

Rev. V1.4

Gene ID

12505;960

Background

CD44 is a 80-95 kD glycoprotein also known as Hermes, Pgp1, H-CAM, or HUTCH. It is expressed on all leukocytes, endothelial cells, hepatocytes, and mesenchymal cells. As B and T cells become activated or progress to the memory stage, CD44 expression increases from low or mid levels to high levels. Thus, CD44 has been reported to be a valuable marker for memory cell subsets. High CD44 expression on Treg cells has been associated with potent suppressive function via high production of IL-10. CD44 is an adhesion molecule involved in leukocyte attachment to and rolling on endothelial cells, homing to peripheral lymphoid organs and to the sites of inflammation, and leukocyte aggregation.