

CALML6 Polyclonal Antibody

catalog number: E-AB-17762

Note: Centrifuge before opening to ensure complete recovery of vial contents.

Description

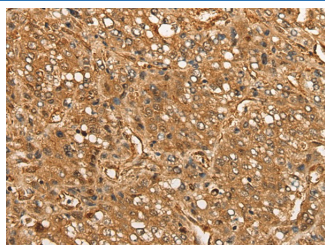
Reactivity	Human
Immunogen	Synthetic peptide of human CALML6
Host	Rabbit
Isotype	IgG
Purification	Antigen affinity purification
Conjugation	Unconjugated
Buffer	Phosphate buffered solution, pH 7.4, containing 0.05% stabilizer and 50% glycerol.

Applications

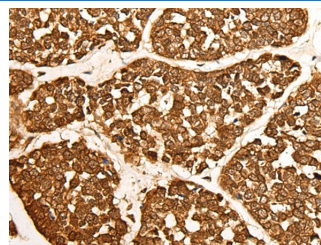
Recommended Dilution

IHC	1:40-1:200
------------	------------

Data



Immunohistochemistry of paraffin-embedded Human liver cancer tissue using CALML6 Polyclonal Antibody at dilution of 1:55(×200)



Immunohistochemistry of paraffin-embedded Human esophagus cancer tissue using CALML6 Polyclonal Antibody at dilution of 1:55(×200)

Preparation & Storage

Storage	Store at -20°C Valid for 12 months. Avoid freeze / thaw cycles.
Shipping	The product is shipped with ice pack, upon receipt, store it immediately at the temperature recommended.

Background

The level of intracellular calcium is tightly regulated in all eukaryotic cells. A modest increase in this level can result in a myriad of physiological responses, most of which are mediated by calmodulin (CaM), a universal calcium sensor. CaM directly modulates the activity of protein kinases and phosphatases, ion channels and nitric oxide synthetases and is generally involved in such diverse processes as cell proliferation, endocytosis, cellular adhesion, protein turnover and smooth muscle contraction. CALML6 (calmodulin-like 6), also known as CAGLP or CALGP, is a 181 amino acid protein that contains four EF-hand domains and shares functional similarity with CaM. Localized to both the nucleus and the cytoplasm, CALML6 is expressed in heart, prostate, ovary, thymus and bone marrow where it may regulate calcium-related events.

For Research Use Only