

CK-19 Polyclonal Antibody

catalog number: E-AB-31146

Note: Centrifuge before opening to ensure complete recovery of vial contents.

Description

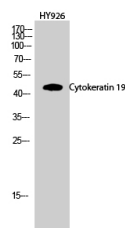
Reactivity	Human;Mouse;Rat
Immunogen	Synthesized peptide derived from the Internal region of human Cytokeratin 19
Host	Rabbit
Isotype	IgG
Purification	Affinity purification
Conjugation	Unconjugated
Buffer	Phosphate buffered solution, pH 7.4, containing 0.05% stabilizer, 0.5% protein protectant and 50% glycerol.

Applications

Recommended Dilution

WB	1:500-1:2000
IHC	1:100-1:300
IF	1:200-1:1000

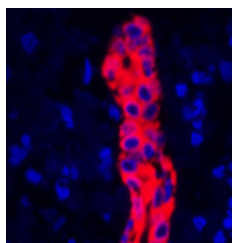
Data



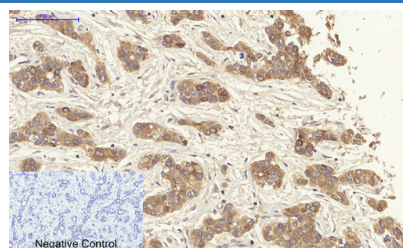
Western Blot analysis of HY926 cells using CK-19 Polyclonal Antibody at dilution of 1:1000.

Observed-MW:44 kDa

Calculated-MW:44-59 kDa



Immunofluorescence analysis of Human liver tissue using CK-19 Polyclonal Antibody at dilution of 1:200.



Immunohistochemistry of paraffin-embedded Human liver cancer tissue using CK-19 Polyclonal Antibody at dilution of 1:200.

Preparation & Storage

Storage	Store at -20°C Valid for 12 months. Avoid freeze / thaw cycles.
Shipping	The product is shipped with ice pack, upon receipt, store it immediately at the temperature recommended.

Background

For Research Use Only

Involved in the organization of myofibers. Together with KRT8, helps to link the contractile apparatus to dystrophin at the costameres of striated muscle.