

## Elab Fluor® 700 Anti-Human CD11a Antibody[TS1/22.1.1.13]

Catalog Number: E-AB-F1055M1

Note: Centrifuge before opening to ensure complete recovery of vial contents.

### Description

<b>Reactivity</b>	Human
<b>Host</b>	Mouse
<b>Isotype</b>	Mouse IgG1, κ
<b>Clone No.</b>	TS1/22.1.1.13
<b>Isotype Control</b>	Elab Fluor® 700 Mouse IgG1, κ Isotype Control[MOPC-21] [Product E-AB-F09792M1]
<b>Conjugation</b>	Elab Fluor® 700
<b>Conjugation Information</b>	Elab Fluor® 700 is designed to be excited by the Red laser (627-640 nm) and detected using an optical filter centered near 719 nm (e.g., a 725/40 nm bandpass filter).
<b>Storage Buffer</b>	Phosphate buffered solution, pH 7.2, containing 0.09% sodium azide and 1% BSA.

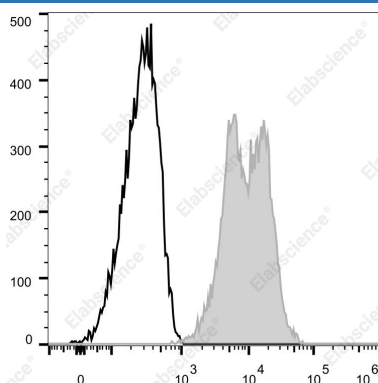
### Applications

### Recommended usage

#### FCM

Each lot of this antibody is quality control tested by flow cytometric analysis. **The amount of the reagent is suggested to be used 5 μL of antibody per test (million cells in 100 μL staining volume or per 100 μL of whole blood).** Please check your vial before the experiment. Since applications vary, the appropriate dilutions must be determined for individual use.

### Data



Staining of normal human peripheral blood cells with Elab Fluor® 700 Anti-Human CD11a Antibody[TS1/22.1.1.13](filled gray histogram) or Elab Fluor® 700 Mouse IgG1, κ Isotype Control(empty black histogram). Cells in the lymphocytes gate were used for analysis.

### Preparation & Storage

<b>Storage</b>	Keep as concentrated solution. This product can be stored at 2-8°C for 12 months. Please protected from prolonged exposure to light and do not freeze.
<b>Shipping</b>	Ice bag

### Antigen Information

<b>Alternate Names</b>	CD11 antigen-like family member A;CD11a;Integrin alpha-L;ltgal;LFA-1A;Ly-15; Lymphocyte antigen 15
<b>Uniprot ID</b>	P20701

### For Research Use Only

**Gene ID**

3683

**Background**

CD11a is a 170-180 kD type I transmembrane glycoprotein also known as LFA-1 $\alpha$  chain and integrin  $\alpha$ L subunit. CD11a non-covalently associates with integrin  $\beta$ 2 (CD18) to form LFA-1. It is expressed on all leukocytes, including B and T lymphocytes, monocytes, macrophages, neutrophils, basophils and eosinophils. It is absent on non-hematopoietic tissues and platelets. CD11a plays a central role in leukocyte cell-cell interactions and is important in lymphocyte costimulation. CD11a/CD18 binds to ICAM-1 (CD54), ICAM-2 (CD102), and ICAM-3 (CD50).