

# ZFP2 Polyclonal Antibody

catalog number: E-AB-18323

**Note:** Centrifuge before opening to ensure complete recovery of vial contents.

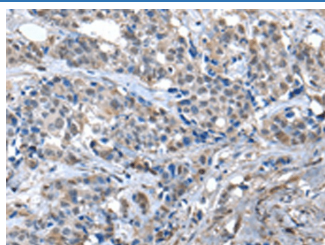
## Description

|                     |  |
|---------------------|--|
| <b>Reactivity</b>   | Human;Mouse  |
| <b>Immunogen</b>    | Fusion protein of human ZFP2   |
| <b>Host</b>         | Rabbit   |
| <b>Isotype</b>      | IgG  |
| <b>Purification</b> | Antigen affinity purification  |
| <b>Conjugation</b>  | Unconjugated   |
| <b>buffer</b>       | Phosphate buffered solution, pH 7.4, containing 0.05% stabilizer and 50% glycerol. |

## Applications

| Applications | Recommended Dilution |
|--------------|----------------------|
| IHC          | 1:30-1:150           |

## Data



Immunohistochemistry of paraffin-embedded Human breast cancer tissue using ZFP2 Polyclonal Antibody at dilution of 1:40(×200)

## Preparation & Storage

|                 |  |
|-----------------|--|
| <b>Storage</b>  | Store at -20°C Valid for 12 months. Avoid freeze / thaw cycles.  |
| <b>Shipping</b> | The product is shipped with ice pack, upon receipt, store it immediately at the temperature recommended. |

## Background

Probable transcription factor involved in neuronal differentiation and/or phenotypic maintenance.

## For Research Use Only