

Recombinant Human Retinol-Binding Protein 1/RBP1 Protein



Catalog Number: PKSH032996

Note: Centrifuge before opening to ensure complete recovery of vial contents.

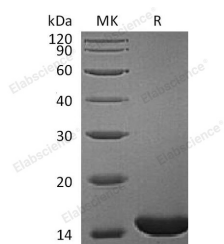
Description

Synonyms	Retinol-binding protein 1; Cellular retinol-binding protein; CRBP; Cellular retinol-binding protein I; CRBP-I; RBP1; CRBP1
Species	Human
Expression Host	E.coli
Sequence	Pro2-Gln135
Accession	P09455
Calculated Molecular Weight	15.7 kDa
Observed molecular weight	14 kDa
Tag	None

Properties

Purity	> 95 % as determined by reducing SDS-PAGE.
Endotoxin	< 1.0 EU per µg of the protein as determined by the LAL method.
Storage	Generally, lyophilized proteins are stable for up to 12 months when stored at -20 to -80°C. Reconstituted protein solution can be stored at 4-8°C for 2-7 days. Aliquots of reconstituted samples are stable at < -20°C for 3 months.
Shipping	This product is provided as lyophilized powder which is shipped with ice packs.
Formulation	Lyophilized from a 0.2 µm filtered solution of PBS, pH 7.4. Normally 5 % - 8 % trehalose, mannitol and 0.01 % Tween80 are added as protectants before lyophilization. Please refer to the specific buffer information in the printed manual.
Reconstitution	Please refer to the printed manual for detailed information.

Data



> 95 % as determined by reducing SDS-PAGE.

Background

Retinol-binding proteins (RBP) are a family of proteins with diverse functions. They are carrier proteins that bind retinol. Retinol and retinoic acid play crucial roles in the modulation of gene expression and overall development of an embryo. However, deficit or excess of either one of these substances can cause early embryo mortality or developmental malformations. Regulation of transport and metabolism of retinol necessary for a successful pregnancy is accomplished via RBP. Retinol binding proteins have been identified within the uterus, embryo, and extraembryonic tissue of the bovine, ovine, and porcine, clearly indicating that RBP plays a role in proper retinol exposure to the embryo and successful transport at the maternal-fetal interface.

For Research Use Only

A Reliable Research Partner in Life Science and Medicine

Toll-free: 1-888-852-8623

Web: www.elabscience.com

Tel: 1-832-243-6086

Email: techsupport@elabscience.com

Fax: 1-832-243-6017