

# Recombinant Human PTH2/PTRH2 Protein (His Tag)

Catalog Number:PKSH030587



**Note:** Centrifuge before opening to ensure complete recovery of vial contents.

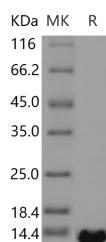
## Description

<b>Synonyms</b>	BIT1;CFAP37;CGI-147;IMNEPD;PTH;PTH 2;PTH2;PTRH2
<b>Species</b>	Human
<b>Expression Host</b>	E.coli
<b>Sequence</b>	Gly63-Tyr179
<b>Accession</b>	Q9Y3E5
<b>Calculated Molecular Weight</b>	14.5 kDa
<b>Observed molecular weight</b>	14 kDa
<b>Tag</b>	N-His

## Properties

<b>Purity</b>	> 95 % as determined by reducing SDS-PAGE.
<b>Endotoxin</b>	Please contact us for more information.
<b>Storage</b>	Generally, lyophilized proteins are stable for up to 12 months when stored at -20 to -80°C. Reconstituted protein solution can be stored at 4-8°C for 2-7 days. Aliquots of reconstituted samples are stable at < -20°C for 3 months.
<b>Shipping</b>	This product is provided as lyophilized powder which is shipped with ice packs.
<b>Formulation</b>	Lyophilized from sterile 20mM Tris, 10% glycerol, pH 8.0 Normally 5 % - 8 % trehalose, mannitol and 0.01% Tween80 are added as protectants before lyophilization. Please refer to the specific buffer information in the printed manual.
<b>Reconstitution</b>	Please refer to the printed manual for detailed information.

## Data



> 95 % as determined by reducing SDS-PAGE.

## Background

PTH2, also known as PTRH2, is a mitochondrial protein which belongs to the PTH2 family. PTH 2 is released during apoptosis from the mitochondria to the cytoplasm. The natural substrate for PTH 2 may be peptidyl-tRNAs which drop off the ribosome during protein synthesis. When in the cytoplasm, PTRH2 regulates the function of 2 transcriptional regulators, TLE5 and TLE1, thus promoting caspase-independent cell death.

## For Research Use Only

A Reliable Research Partner in Life Science and Medicine

Toll-free: 1-888-852-8623

Web: [www.elabscience.com](http://www.elabscience.com)

Tel: 1-832-243-6086

Email: [techsupport@elabscience.com](mailto:techsupport@elabscience.com)

Fax: 1-832-243-6017