

Recombinant Human GGPS1 Protein (His Tag)

Catalog Number: PKSH032484

Note: Centrifuge before opening to ensure complete recovery of vial contents.

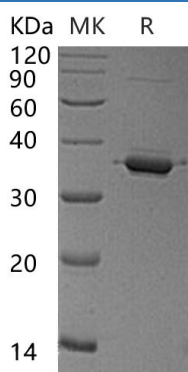
Description

Species	Human
Source	E.coli-derived Human GGPS1 protein Met 1-Glu300, with an N-terminal His
Calculated MW	37.0 kDa
Observed MW	35 kDa
Accession	O95749
Bio-activity	Not validated for activity

Properties

Purity	> 95 % as determined by reducing SDS-PAGE.
Concentration	Subject to label value.
Endotoxin	< 1.0 EU per µg of the protein as determined by the LAL method.
Storage	Store at < -20°C, stable for 6 months. Please minimize freeze-thaw cycles.
Shipping	This product is provided as liquid. It is shipped at frozen temperature with blue ice/gel packs. Upon receipt, store it immediately at < - 20°C.
Formulation	Supplied as a 0.2 µm filtered solution of 20mM Tris-HCl, 150mM NaCl, 20% Glycerol, pH 8.0.

Data



> 95 % as determined by reducing SDS-PAGE.

Background

Geranylgeranyl pyrophosphate synthase (GGPS1) is a member of the FPP/GGPP synthase family. GGPS1 is highly expressed in testis, heart and skeletal muscle. GGPS1 is localized in the cytoplasm and has geranylgeranyl diphosphate (GGPP) synthase activity. It catalyzes the trans-addition of the three molecules of IPP onto DMAPP to form geranylgeranyl pyrophosphate, an important precursor of carotenoids and geranylated proteins. Other transcriptional splice variants have been found.