

## Recombinant Human PARP-3/PARP3 Protein (His & GST Tag)

**Catalog Number:** PKSH031216

**Note:** Centrifuge before opening to ensure complete recovery of vial contents.

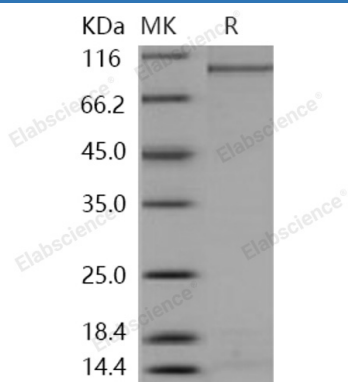
### Description

<b>Species</b>	Human
<b>Source</b>	Baculovirus-Insect Cells-derived Human PARP-3/PARP3 protein Met 1-Leu 533, with an N-terminal His & GST
<b>Calculated MW</b>	87.8 kDa
<b>Observed MW</b>	95 kDa
<b>Accession</b>	Q9Y6F1-1
<b>Bio-activity</b>	Not validated for activity

### Properties

<b>Purity</b>	> 85 % as determined by reducing SDS-PAGE.
<b>Endotoxin</b>	< 1.0 EU per µg of the protein as determined by the LAL method.
<b>Storage</b>	Generally, lyophilized proteins are stable for up to 12 months when stored at -20 to -80 °C. Reconstituted protein solution can be stored at 4-8°C for 2-7 days. Aliquots of reconstituted samples are stable at < -20°C for 3 months.
<b>Shipping</b>	This product is provided as lyophilized powder which is shipped with ice packs.
<b>Formulation</b>	Lyophilized from sterile 20mM Tris, 500mM NaCl, pH 8.0, 10% glycerol Normally 5% - 8% trehalose, mannitol and 0.01% Tween 80 are added as protectants before lyophilization. Please refer to the specific buffer information in the printed manual.
<b>Reconstitution</b>	Please refer to the printed manual for detailed information.

### Data



> 85 % as determined by reducing SDS-PAGE.

### Background

### For Research Use Only

Toll-free: 1-888-852-8623  
Web: [www.elabscience.com](http://www.elabscience.com)

Tel: 1-832-243-6086  
Email: [techsupport@elabscience.com](mailto:techsupport@elabscience.com)

Fax: 1-832-243-6017

Regenerating islet-derived protein 4, also known as REG-like protein, REG4, GLSP and RELP, a member of the regenerating gene family belonging to the calcium (C-type) dependent lectin superfamily, has been found to be involved in malignancy in several different organs including the stomach, colorectum, pancreas and prostate. It is highly expressed in the gastrointestinal tract and markedly up-regulated in colon adenocarcinoma, pancreatic cancer, gastric adenocarcinoma, and inflammatory bowel disease. Expression of the Reg4 in different cell types has been associated with regeneration, cell growth and cell survival, cell adhesion and resistance to apoptosis. REG4 protein overexpression is associated with an unfavorable response to preoperative chemoradiotherapy and may be used as a predictive biomarker clinically. REG4 may play an important role in the development and progression of colorectal cancer, as well as in intestinal morphogenesis and epithelium restitution.