

## ENPEP Polyclonal Antibody

catalog number: E-AB-19620

**Note:** Centrifuge before opening to ensure complete recovery of vial contents.

### Description

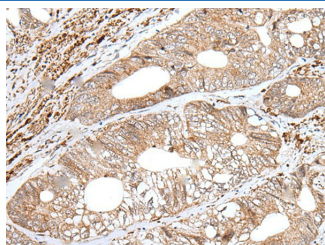
<b>Reactivity</b>	Human;Mouse;Rat
<b>Immunogen</b>	Synthetic peptide of human ENPEP
<b>Host</b>	Rabbit
<b>Isotype</b>	IgG
<b>Purification</b>	Antigen affinity purification
<b>Conjugation</b>	Unconjugated
<b>Buffer</b>	Phosphate buffered solution, pH 7.4, containing 0.05% stabilizer and 50% glycerol.

### Applications

### Recommended Dilution

<b>IHC</b>	1:50-1:300
------------	------------

### Data



Immunohistochemistry of paraffin-embedded Human colorectal cancer tissue using ENPEP Polyclonal Antibody at dilution of 1:65(×200)

### Preparation & Storage

<b>Storage</b>	Store at -20°C Valid for 12 months. Avoid freeze / thaw cycles.
<b>Shipping</b>	The product is shipped with ice pack, upon receipt, store it immediately at the temperature recommended.

### Background

ENPEP (Glutamyl Aminopeptidase) is a Protein Coding gene. Diseases associated with ENPEP include Neurogenic Hypertension and Gestational Choriocarcinoma. Among its related pathways are Metabolism of proteins and Peptide hormone metabolism. GO annotations related to this gene include peptidase activity and aminopeptidase activity. An important paralog of this gene is ANPEP.