

## Recombinant Human SAA2/Serum Amyloid A2 Protein (His Tag)

Catalog Number: PKSH033532

**Note:** Centrifuge before opening to ensure complete recovery of vial contents.

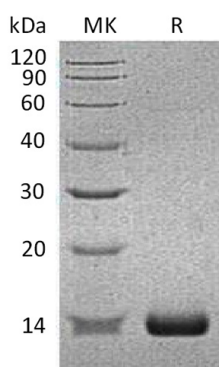
### Description

<b>Species</b>	Human
<b>Source</b>	E.coli-derived Human SAA2/Serum Amyloid A2 protein Arg19-Tyr122, with an N-terminal His
<b>Calculated MW</b>	13.2 kDa
<b>Observed MW</b>	14 kDa
<b>Accession</b>	AAH20795.1
<b>Bio-activity</b>	Not validated for activity

### Properties

<b>Purity</b>	> 95 % as determined by reducing SDS-PAGE.
<b>Endotoxin</b>	< 1.0 EU per µg of the protein as determined by the LAL method.
<b>Storage</b>	Generally, lyophilized proteins are stable for up to 12 months when stored at -20 to -80 °C. Reconstituted protein solution can be stored at 4-8°C for 2-7 days. Aliquots of reconstituted samples are stable at < -20°C for 3 months.
<b>Shipping</b>	This product is provided as lyophilized powder which is shipped with ice packs.
<b>Formulation</b>	Lyophilized from a 0.2 µm filtered solution of 20mM PB, 150mM NaCl, 1mM EDTA, pH 7.4. Normally 5% - 8% trehalose, mannitol and 0.01% Tween 80 are added as protectants before lyophilization. Please refer to the specific buffer information in the printed manual.
<b>Reconstitution</b>	Please refer to the printed manual for detailed information.

### Data



> 95 % as determined by reducing SDS-PAGE.

### Background

Serum amyloid A2 protein (SAA2) belongs to the SAA family. It expressed by the liver and secreted in plasma. SAA2 functions as major acute phase reactant and could works as apolipoprotein of the HDL complex. Increased levels of A-SAA in serum are indicative of inflammatory disease. When highly expressed, SAA can displace ApoA1 as the major apolipoprotein in HDL complexes, weakening the function of HDL as a reverse (lipid clearing) cholesterol transporter. A highly charged region of SAA2 and SAA1 (aa 36-68) contains putative fibronectin- and laminin-binding motifs. This region also binds heparin sulfate proteoglycans at mildly acidic pH and promotes aggregation of A-SAA.

### For Research Use Only