

## RRAGC Polyclonal Antibody

catalog number: E-AB-15367

**Note:** Centrifuge before opening to ensure complete recovery of vial contents.

### Description

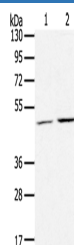
<b>Reactivity</b>	Human;Mouse
<b>Immunogen</b>	Recombinant protein of human RRAGC
<b>Host</b>	Rabbit
<b>Isotype</b>	IgG
<b>Purification</b>	Affinity purification
<b>Conjugation</b>	Unconjugated
<b>Buffer</b>	Phosphate buffered solution, pH 7.4, containing 0.05% stabilizer and 50% glycerol.

### Applications

### Recommended Dilution

<b>WB</b>	1:500-1:2000
-----------	--------------

### Data



Western Blot analysis of K562 and NIH/3T3 cell using  
RRAGC Polyclonal Antibody at dilution of 1:400

**Calculated-MV:44 kDa**

### Preparation & Storage

<b>Storage</b>	Store at -20°C Valid for 12 months. Avoid freeze / thaw cycles.
<b>Shipping</b>	The product is shipped with ice pack, upon receipt, store it immediately at the temperature recommended.

### Background

This gene encodes a member of the GTR/RAG GTP-binding protein family. The encoded protein is a monomeric guanine nucleotide-binding protein which forms a heterodimer with RRAGA and RRAGB and is primarily localized to the cytoplasm. The encoded protein promotes intracellular localization of the mTOR complex. Alternative splicing results in multiple transcript variants.