

SHPRH Polyclonal Antibody

Catalog Number: E-AB-17032



Note: Centrifuge before opening to ensure complete recovery of vial contents.

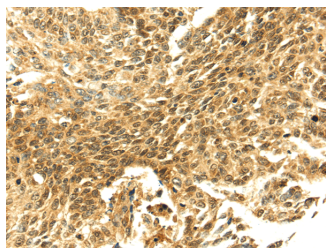
Description

Reactivity	Human, Mouse
Immunogen	Fusion protein of human SHPRH
Host	Rabbit
Isotype	IgG
Purification	Affinity purification
Conjugation	Unconjugated
Formulation	PBS with 0.05% sodium azide and 50% glycerol, PH7.4

Applications Recommended Dilution

IHC	1:30-150
ELISA	1:2000-10000

Data



Immunohistochemistry of paraffin-embedded Human lung cancer tissue using SHPRH Polyclonal Antibody at dilution 1:40

Preparation & Storage

Storage Store at -20°C. Avoid freeze / thaw cycles.

Background

SHPRH is a ubiquitously expressed protein that contains motifs characteristic of several DNA repair proteins, transcription factors, and helicases. SHPRH is a functional homolog of *S. cerevisiae* RAD5 (Unk et al., 2006 [PubMed 17108083]).

For Research Use Only

A Reliable Research Partner in Life Science and Medicine

Toll-free: 1-888-852-8623

Web: www.elabscience.com

Tel: 1-832-243-6086

Email: techsupport@elabscience.com

Fax: 1-832-243-6017