

SEC11A Polyclonal Antibody

catalog number: E-AB-52703

Note: Centrifuge before opening to ensure complete recovery of vial contents.

Description

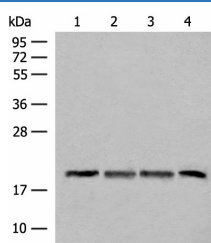
Reactivity	Human;Mouse;Rat
Immunogen	Fusion protein of human SEC11A
Host	Rabbit
Isotype	IgG
Purification	Antigen affinity purification
Conjugation	Unconjugated
buffer	Phosphate buffered solution, pH 7.4, containing 0.05% stabilizer and 50% glycerol.

Applications

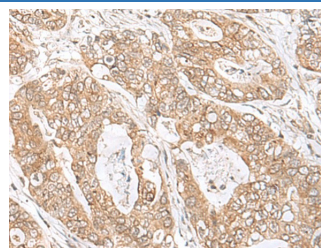
Recommended Dilution

WB	1:500-1:2000
IHC	1:40-1:200

Data



Western blot analysis of TM4 HEPG2 and A549 cell Mouse liver tissue lysates using SEC11A Polyclonal Antibody at dilution of 1:300



Immunohistochemistry of paraffin-embedded Human gastric cancer tissue using SEC11A Polyclonal Antibody at dilution of 1:45(×200)

Observed-MV:Refer to figures

Calculated-MV:21 kDa

Preparation & Storage

Storage	Store at -20°C Valid for 12 months. Avoid freeze / thaw cycles.
Shipping	The product is shipped with ice pack,upon receipt,store it immediately at the temperature recommended.

Background

This gene encodes a member of the peptidase S26B family. The encoded protein is an 18kDa subunit of the signal peptidase complex and has been linked to cell migration and invasion, gastric cancer and lymph node metastasis. Alternative splicing results in multiple transcript variants. A related pseudogene has been identified on chromosome 8.

For Research Use Only