

# LSM12 Polyclonal Antibody

Catalog Number:E-AB-91365



**Note:** Centrifuge before opening to ensure complete recovery of vial contents.

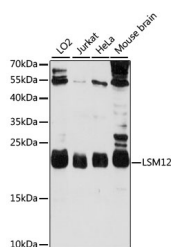
## Description

<b>Reactivity</b>	Human,Mouse
<b>Immunogen</b>	Recombinant fusion protein of human LSM12
<b>Host</b>	Rabbit
<b>Isotype</b>	IgG
<b>Purification</b>	Affinity purification
<b>Conjugation</b>	Unconjugated
<b>Formulation</b>	PBS with 0.01% thiomersal,50% glycerol,pH7.3.

## Applications Recommended Dilution

<b>WB</b>	1:500-1:2000
-----------	--------------

## Data



Western blot analysis of extracts of various cell lines using LSM12 Polyclonal Antibody at 1000 dilution.

**Observed MW:22kDa**

**Calculated Mw:21kDa**

## Preparation & Storage

**Storage** Store at -20°C. Avoid freeze/thaw cycles.

## Background

Nicotinic acid adenine dinucleotide phosphate (NAADP) binding protein (PubMed:34362892). Confers NAADP sensitivity to the two pore channel complex (TPCs) by acting as TPC accessory protein necessary for NAADP-evoked Ca(2+) release (PubMed:34362892). ( LSM12\_HUMAN,Q3MHD2 )

## For Research Use Only

A Reliable Research Partner in Life Science and Medicine

Toll-free: 1-888-852-8623

Web: [www.elabscience.com](http://www.elabscience.com)

Tel: 1-832-243-6086

Email: [techsupport@elabscience.com](mailto:techsupport@elabscience.com)

Fax: 1-832-243-6017