

DLK1 Polyclonal Antibody

Catalog Number:E-AB-18225



Note: Centrifuge before opening to ensure complete recovery of vial contents.

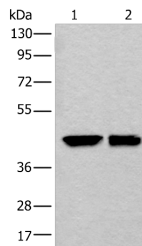
Description

| | |
|---------------------|--|
| Reactivity | Human, Mouse |
| Immunogen | Fusion protein of human DLK1 |
| Host | Rabbit |
| Isotype | IgG |
| Purification | Antigen affinity purification |
| Conjugation | Unconjugated |
| Formulation | PBS with 0.05% NaN ₃ and 40% Glycerol,pH7.4 |

Applications Recommended Dilution

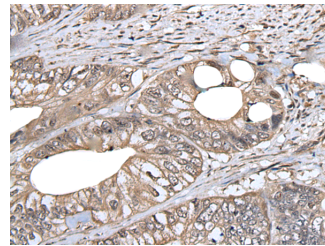
| | |
|--------------|----------------|
| WB | 1:500-1:2000 |
| IHC | 1:25-1:100 |
| ELISA | 1:5000-1:10000 |

Data



Western blot analysis of HEPG2 and 231 cell lysates using DLK1 Polyclonal Antibody at dilution of 1:250

Observed MW:Refer to figures
Calculated Mw:41 kDa



Immunohistochemistry of paraffin-embedded Human colorectal cancer tissue using DLK1 Polyclonal Antibody at dilution of 1:30(×200)

Preparation & Storage

Storage Store at -20°C. Avoid freeze / thaw cycles.

Background

This gene encodes a transmembrane protein containing six epidermal growth factor repeats. The protein is involved in the differentiation of several cell types, including adipocytes; it is also thought to be a tumor suppressor. It is one of several imprinted genes located in a region of on chr 14q32. Certain mutations in this imprinted region can cause phenotypes similar to maternal and paternal uniparental disomy of chromosome 14 (UPD14). This gene is expressed from the paternal allele. A polymorphism within this gene has been associated with child and adolescent obesity.

For Research Use Only

A Reliable Research Partner in Life Science and Medicine

Toll-free: 1-888-852-8623

Web: www.elabscience.com

Tel: 1-832-243-6086

Email: techsupport@elabscience.com

Fax: 1-832-243-6017