

STAT3 Monoclonal Antibody

catalog number: E-AB-22119

Note: Centrifuge before opening to ensure complete recovery of vial contents.

Description

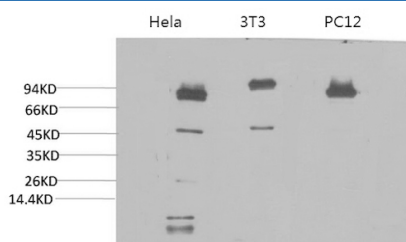
| | |
|---------------------|-------------------------------------------------------------------------------------------------------------|
| Reactivity | Human;Mouse;Rat |
| Immunogen | Recombinant Protein |
| Host | Mouse |
| Isotype | IgG |
| Clone | 4E3 |
| Purification | Protein A purification |
| Conjugation | Unconjugated |
| buffer | Phosphate buffered solution, pH 7.4, containing 0.05% stabilizer, 0.5% protein protectant and 50% glycerol. |

Applications

Recommended Dilution

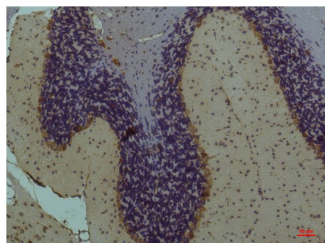
| | |
|------------|-------------|
| WB | 1:1000-2000 |
| IHC | 1:100-200 |

Data

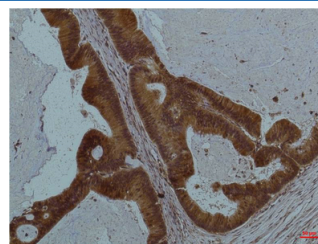


Western Blot analysis of 1) HeLa, 2) 3T3, 3) PC-12 cells using STAT3 Monoclonal Antibody at dilution of 1:2000.

Observed-MV:79 ,86kDa



Immunohistochemistry of paraffin-embedded Mouse brain tissue using STAT3 Monoclonal Antibody at dilution of 1:200.



Immunohistochemistry of paraffin-embedded Human colon carcinoma tissue using STAT3 Monoclonal Antibody at dilution of 1:200.

Preparation & Storage

| | |
|-----------------|----------------------------------------------------------------------------------------------------------|
| Storage | Store at -20°C Valid for 12 months. Avoid freeze / thaw cycles. |
| Shipping | The product is shipped with ice pack, upon receipt, store it immediately at the temperature recommended. |

Background

Signal transducer and transcription activator that mediates cellular responses to interleukins, KITLG/SCF, LEP and other growth factors. Once activated, recruits coactivators, such as NCOA1 or MED1, to the promoter region of the target gene (PubMed:173442)

For Research Use Only