

# Recombinant Human CD3D & CD3E Heterodimer Protein



Catalog Number:PKSH030479

**Note:** Centrifuge before opening to ensure complete recovery of vial contents.

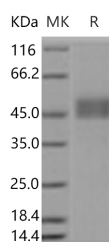
## Description

<b>Synonyms</b>	T-Cell Surface Glycoprotein CD3 Delta Chain;T-Cell Receptor T3 Delta Chain;CD3d;CD3D;T3D
<b>Species</b>	Human
<b>Expression Host</b>	HEK293 Cells
<b>Sequence</b>	Met 1-Ala105&Met 1-Asp126
<b>Accession</b>	P04234-1&P07766-1
<b>Calculated Molecular Weight</b>	37.5&40 kDa
<b>Observed molecular weight</b>	45-50 kDa
<b>Tag</b>	C-Flag-hFc
<b>Bioactivity</b>	Measured by its binding ability in a functional ELISA. Immobilized human CD3D & CD3E Heterodimer Protein at 10 µg/ml (100 µl/well) can bind OKT3-mIgG2a. The EC50 of OKT3-mIgG2a is 0.07-0.17 µg/ml.

## Properties

<b>Purity</b>	> 90 % as determined by reducing SDS-PAGE.
<b>Endotoxin</b>	< 1.0 EU per µg of the protein as determined by the LAL method.
<b>Storage</b>	Generally, lyophilized proteins are stable for up to 12 months when stored at -20 to -80°C. Reconstituted protein solution can be stored at 4-8°C for 2-7 days. Aliquots of reconstituted samples are stable at < -20°C for 3 months.
<b>Shipping</b>	This product is provided as lyophilized powder which is shipped with ice packs.
<b>Formulation</b>	Lyophilized from sterile PBS, pH 7.4 Normally 5 % - 8 % trehalose, mannitol and 0.01% Tween80 are added as protectants before lyophilization. Please refer to the specific buffer information in the printed manual.
<b>Reconstitution</b>	Please refer to the printed manual for detailed information.

## Data



> 90 % as determined by reducing SDS-PAGE.

## Background

T-cell surface glycoprotein CD3D & CD3E, also known as CD3 delta & CD3 epsilon chain, are single-pass type I membrane proteins. CD3D, together with CD3- epsilon(CD3E) , CD3-gamma and CD3-zeta, and the T-cell receptor alpha/beta and gamma/delta heterodimers, forms the T cell receptor-CD3 complex. T cell receptor-CD3 complex plays an important role in coupling antigen recognition to several intracellular signal-transduction pathways.

## For Research Use Only

A Reliable Research Partner in Life Science and Medicine

Toll-free: 1-888-852-8623

Web: [www.elabscience.com](http://www.elabscience.com)

Tel: 1-832-243-6086

Email: [techsupport@elabscience.com](mailto:techsupport@elabscience.com)

Fax: 1-832-243-6017