

RETNLB Polyclonal Antibody

Catalog Number:E-AB-10579

Note: Centrifuge before opening to ensure complete recovery of vial contents.

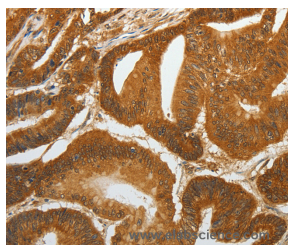
Description

Reactivity	Human
Immunogen	Recombinant protein of human RETNLB
Host	Rabbit
Isotype	IgG
Purification	Affinity purification
Conjugation	Unconjugated
Formulation	PBS with 0.05% sodium azide and 50% glycerol, PH7.4

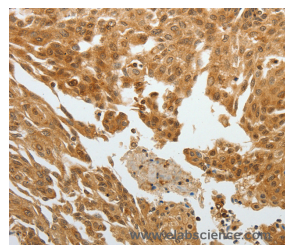
Applications Recommended Dilution

IHC	1:50-1:200
------------	------------

Data



Immunohistochemistry of paraffin-embedded Human colon cancer tissue using RETNLB Polyclonal Antibody at dilution 1:40



Immunohistochemistry of paraffin-embedded Human cervical cancer tissue using RETNLB Polyclonal Antibody at dilution 1:40

Preparation & Storage

Storage	Store at -20°C. Avoid freeze / thaw cycles.
----------------	---------------------------------------------

Background

Resistin-like beta is a protein that in humans is encoded by the RETNLB gene. An infusion of either resistin or RELMB in rats rapidly induced severe hepatic but not peripheral insulin resistance. Increases in circulating resistin or RELMB levels markedly stimulated hepatic glucose production despite the presence of fixed physiologic insulin levels. This enhanced rate of glucose output was due to increased flux through glucose-6-phosphatase. The results supported the notion that a novel family of fat- and gut-derived circulating proteins modulates hepatic insulin action.

For Research Use Only

A Reliable Research Partner in Life Science and Medicine

Toll-free: 1-888-852-8623

Web: www.elabscience.com

Tel: 1-832-243-6086

Email: techsupport@elabscience.com

Fax: 1-832-243-6017