

# CCL13 Polyclonal Antibody

catalog number: E-AB-52140

**Note:** Centrifuge before opening to ensure complete recovery of vial contents.

## Description

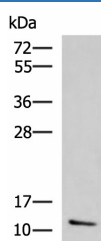
|                     |  |
|---------------------|--|
| <b>Reactivity</b>   | Human  |
| <b>Immunogen</b>    | Fusion protein of human CCL13  |
| <b>Host</b>         | Rabbit   |
| <b>Isotype</b>      | IgG  |
| <b>Purification</b> | Antigen affinity purification  |
| <b>Conjugation</b>  | Unconjugated   |
| <b>buffer</b>       | Phosphate buffered solution, pH 7.4, containing 0.05% stabilizer and 50% glycerol. |

## Applications

## Recommended Dilution

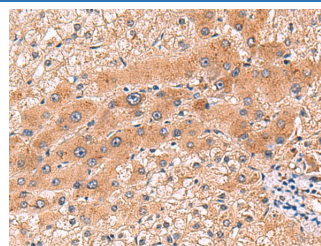
|            |              |
|------------|--------------|
| <b>WB</b>  | 1:500-1:2000 |
| <b>IHC</b> | 1:80-1:400   |

## Data



Western blot analysis of Human ileum tissue lysate using CCL13 Polyclonal Antibody at dilution of 1:800

**Observed-MV:Refer to figures**  
**Calculated-MV:11 kDa**



Immunohistochemistry of paraffin-embedded Human liver cancer tissue using CCL13 Polyclonal Antibody at dilution of 1:90( $\times 200$ )

## Preparation & Storage

|                 |  |
|-----------------|--|
| <b>Storage</b>  | Store at $-20^{\circ}\text{C}$ Valid for 12 months. Avoid freeze / thaw cycles.                          |
| <b>Shipping</b> | The product is shipped with ice pack, upon receipt, store it immediately at the temperature recommended. |

## Background

This gene is one of several Cys-Cys (CC) cytokine genes clustered on the q-arm of chromosome 17. Cytokines are a family of secreted proteins involved in immunoregulatory and inflammatory processes. The CC cytokines are proteins characterized by two adjacent cysteines. The cytokine encoded by this gene displays chemotactic activity for monocytes, lymphocytes, basophils and eosinophils, but not neutrophils. This chemokine plays a role in accumulation of leukocytes during inflammation. It may also be involved in the recruitment of monocytes into the arterial wall during atherosclerosis.

## For Research Use Only