

SHC3 Polyclonal Antibody

catalog number: E-AB-52214

Note: Centrifuge before opening to ensure complete recovery of vial contents.

Description

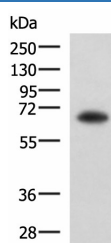
Reactivity	Human;Mouse;Rat
Immunogen	Fusion protein of human SHC3
Host	Rabbit
Isotype	IgG
Purification	Antigen affinity purification
Conjugation	Unconjugated
buffer	Phosphate buffered solution, pH 7.4, containing 0.05% stabilizer and 50% glycerol.

Applications

Recommended Dilution

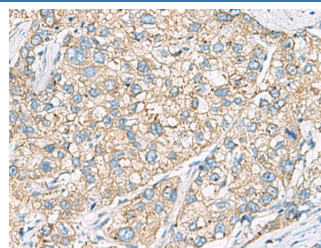
WB	1:500-1:2000
IHC	1:50-1:100

Data



Western blot analysis of PC3 cell lysate using SHC3 Polyclonal Antibody at dilution of 1:650

Observed-MV: Refer to figures
Calculated-MV: 64 kDa



Immunohistochemistry of paraffin-embedded Human liver cancer tissue using SHC3 Polyclonal Antibody at dilution of 1:40 (x200)

Preparation & Storage

Storage	Store at -20°C Valid for 12 months. Avoid freeze / thaw cycles.
Shipping	The product is shipped with ice pack, upon receipt, store it immediately at the temperature recommended.

Background

Signaling adapter that couples activated growth factor receptors to signaling pathway in neurons. Involved in the signal transduction pathways of neurotrophin-activated Trk receptors in cortical neurons.

For Research Use Only