

Recombinant 2B4/CD244 Monoclonal Antibody

catalog number: **AN300092P**

Note: Centrifuge before opening to ensure complete recovery of vial contents.

Description

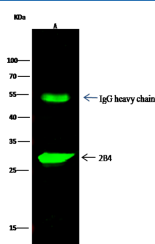
Reactivity	Human
Immunogen	Recombinant Human 2B4 / CD244 protein
Host	Rabbit
Isotype	IgG
Clone	6H3
Purification	Protein A
Buffer	0.2 µm filtered solution in PBS

Applications

Recommended Dilution

WB	1:500-1:2000
IP	1-4 µL/mg of lysate

Data



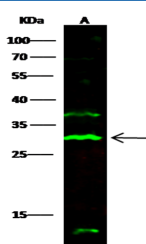
Immunoprecipitation analysis using 2 µL anti-2B4 Monoclonal Antibody and 15 µl of 50 % Protein G agarose.

Western blot was performed from the immunoprecipitate using 2B4 Monoclonal Antibody at a dilution of 1:200. Lane

A: 0.5 mg Daudi Whole Cell Lysate

Observed-MW: 28 kDa

Calculated-MW: 42 kDa



Western Blot with 2B4 / CD244 Monoclonal Antibody at dilution of 1:500. Lane A: Daudi Whole Cell Lysate, Lysates/proteins at 30 µg per lane.

Observed-MW: 28 kDa

Calculated-MW: 42 kDa

Preparation & Storage

Storage This antibody can be stored at 2°C-8°C for one month without detectable loss of activity. Antibody products are stable for twelve months from date of receipt when stored at -20°C to -80°C. Preservative-Free. Avoid repeated freeze-thaw cycles.

Shipping Ice bag

Background

CD244, known as 2B4, is a 38 kD type I transmembrane protein. It is a member of the CD2 subset of the immunoglobulin superfamily (IgSF) molecules. CD244 is expressed on NK cells, a subset of T cells (including most CD8+ T cells and γ/δ T cells), monocytes, basophils, and eosinophils. CD48 is the ligand of CD244. It has been reported that ligation of human CD244 results in enhanced NK cell cytotoxicity and cytokine production. Recent studies have shown that human CD244, like murine CD244, has both activating and inhibitory functions, which are dependent on the density of surface 2B4 expression, degree of ligation, and the level of the adaptor molecule SAP expression.

For Research Use Only