

# BRINP3 Polyclonal Antibody

Catalog Number: E-AB-92001



**Note:** Centrifuge before opening to ensure complete recovery of vial contents.

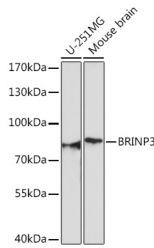
## Description

<b>Reactivity</b>	Human, Mouse, Rat
<b>Immunogen</b>	Recombinant fusion protein of human BRINP3
<b>Host</b>	Rabbit
<b>Isotype</b>	IgG
<b>Purification</b>	Affinity purification
<b>Conjugation</b>	Unconjugated
<b>Formulation</b>	PBS with 0.01% thiomersal, 50% glycerol, pH 7.3.

## Applications Recommended Dilution

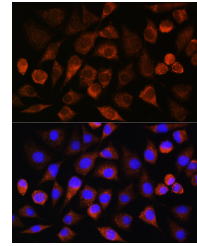
<b>WB</b>	1:500-1:2000
<b>IF</b>	1:50-1:200

## Data



Western blot analysis of extracts of various cell lines using BRINP3 Polyclonal Antibody at 1:1000 dilution.

**Observed Mw: 88kDa**  
**Calculated Mw: 88kDa**



Immunofluorescence analysis of L929 cells using BRINP3 Polyclonal Antibody at dilution of 1:100. Blue: DAPI for nuclear staining.

## Preparation & Storage

**Storage** Store at -20°C. Avoid freeze/thaw cycles.

## Background

This gene is overexpressed in pituitary tumors but is underexpressed in tongue squamous cell carcinomas, ulcerative colitis, and peri-implantitis. Polymorphisms that increase expression of this gene have been shown to increase vascular inflammation, and an association of this gene with myocardial infarction has been demonstrated. Finally, hypermethylation of this gene may find usefulness as a biomarker for gastric cancer. Two transcript variants encoding different isoforms have been found for this gene.

## For Research Use Only

A Reliable Research Partner in Life Science and Medicine

Toll-free: 1-888-852-8623

Web: [www.elabscience.com](http://www.elabscience.com)

Tel: 1-832-243-6086

Email: [techsupport@elabscience.com](mailto:techsupport@elabscience.com)

Fax: 1-832-243-6017