

# Recombinant Human SH2D1A/SAP Protein (His Tag)

Catalog Number: PKSH031236



**Note:** Centrifuge before opening to ensure complete recovery of vial contents.

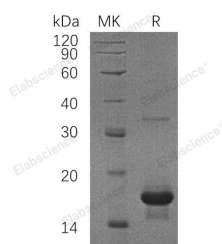
## Description

<b>Synonyms</b>	SH2 Domain-Containing Protein 1A; Duncan Disease SH2-Protein; Signaling Lymphocytic Activation Molecule-Associated Protein; SLAM-Associated Protein; T-Cell Signal Transduction Molecule SAP; SH2D1A; DSHP; EBVS; IMD5; LYP; MTCP1; SAP/SH2D1A; XLP; XLDP; XLDP1
<b>Species</b>	Human
<b>Expression Host</b>	E.coli
<b>Sequence</b>	Pro 2-Lys 97
<b>Accession</b>	NP_002342.1
<b>Calculated Molecular Weight</b>	15.6 kDa
<b>Observed molecular weight</b>	14 kDa
<b>Tag</b>	N-His
<b>Bioactivity</b>	Measured by its ability to bind recombinant human SLAMF1, human SLAMF6, mouse SLAMF6, mouse CD84 in functional ELISA.

## Properties

<b>Purity</b>	> 94 % as determined by reducing SDS-PAGE.
<b>Endotoxin</b>	Please contact us for more information.
<b>Storage</b>	Generally, lyophilized proteins are stable for up to 12 months when stored at -20 to -80°C. Reconstituted protein solution can be stored at 4-8°C for 2-7 days. Aliquots of reconstituted samples are stable at < -20°C for 3 months.
<b>Shipping</b>	This product is provided as lyophilized powder which is shipped with ice packs.
<b>Formulation</b>	Lyophilized from sterile PBS, pH 7.5, 20% glycerol Normally 5 % - 8 % trehalose, mannitol and 0.01% Tween80 are added as protectants before lyophilization. Please refer to the specific buffer information in the printed manual.
<b>Reconstitution</b>	Please refer to the printed manual for detailed information.

## Data



> 94 % as determined by reducing SDS-PAGE.

## Background

SH2 domain-containing protein 1A (SH2D1A / SAP) is a 128 amino acid protein, containing a single Src homology 2 (SH2) domain, flanked by 5 amino acids at the N-terminus and 25 amino acids at the C-terminus. The absence of a catalytic domain and the presence of an SH2 domain suggest that SH2D1A regulates one or more signal transduction

## For Research Use Only

A Reliable Research Partner in Life Science and Medicine

Toll-free: 1-888-852-8623

Web: [www.elabscience.com](http://www.elabscience.com)

Tel: 1-832-243-6086

Email: [techsupport@elabscience.com](mailto:techsupport@elabscience.com)

Fax: 1-832-243-6017

# Recombinant Human SH2D1A/SAP Protein (His Tag)

Catalog Number:PKSH031236



pathways. SH2D1A interacts with signaling lymphocytic activation molecule (SLAM), which is a transmembrane protein expressed on the surface of activated T and B cells. SH2D1A (SAP) interacts via its SH2 domain with a motif (TIYXXV) present in the cytoplasmic tail of the cell-surface receptors, including CD150 / SLAM, CD84, CD229 / Ly-9, and CD244 / 2B4. SH2D1A was expressed in EBV-carrying, tumor phenotype representative (type I), but not in EBV-carrying lymphoblastoid cell line (LCL)-like (type III) or EBV-negative Burkitt lymphoma (BL) lines. It has been supposed to be related to the X-linked lymphoproliferative disease which is also known as Duncan's disease or Purtilo syndrome.

---

## For Research Use Only

A Reliable Research Partner in Life Science and Medicine

Toll-free: 1-888-852-8623

Web: [www.elabscience.com](http://www.elabscience.com)

Tel: 1-832-243-6086

Email: [techsupport@elabscience.com](mailto:techsupport@elabscience.com)

Fax: 1-832-243-6017