

GIMAP2 Polyclonal Antibody

catalog number: E-AB-52899

Note: Centrifuge before opening to ensure complete recovery of vial contents.

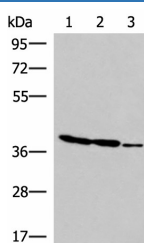
Description

| | |
|---------------------|--|
| Reactivity | Human |
| Immunogen | Fusion protein of human GIMAP2 |
| Host | Rabbit |
| Isotype | IgG |
| Purification | Antigen affinity purification |
| Conjugation | Unconjugated |
| buffer | Phosphate buffered solution, pH 7.4, containing 0.05% stabilizer and 50% glycerol. |

Applications

| Applications | Recommended Dilution |
|--------------|----------------------|
| WB | 1:1000-1:5000 |
| IHC | 1:50-1:300 |

Data



Western blot analysis of HT-29 K562 and HUVEC cell lysates using GIMAP2 Polyclonal Antibody at dilution of 1:1000



Immunohistochemistry of paraffin-embedded Human tonsil tissue using GIMAP2 Polyclonal Antibody at dilution of 1:60(×200)

Observed-MV:Refer to figures

Calculated-MV:38 kDa

Preparation & Storage

| | |
|-----------------|--|
| Storage | Store at -20°C Valid for 12 months. Avoid freeze / thaw cycles. |
| Shipping | The product is shipped with ice pack, upon receipt, store it immediately at the temperature recommended. |

Background

This gene encodes a protein belonging to the GTP-binding superfamily and to the immuno-associated nucleotide (IAN) subfamily of nucleotide-binding proteins. In humans, the IAN subfamily genes are located in a cluster at 7q36.1. GIMAP2 (GTPase, IMAP Family Member 2) is a Protein Coding gene. Diseases associated with GIMAP2 include Behcet Syndrome. GO annotations related to this gene include GTP binding. An important paralog of this gene is GIMAP1-GIMAP5.

For Research Use Only