

## Recombinant IGF1R/CD221 Monoclonal Antibody

catalog number: **AN300050P**

**Note:** Centrifuge before opening to ensure complete recovery of vial contents.

### Description

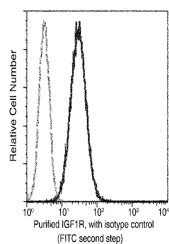
<b>Reactivity</b>	Human
<b>Immunogen</b>	Recombinant Human IGF1R / CD221 protein
<b>Host</b>	Rabbit
<b>Isotype</b>	IgG
<b>Clone</b>	2C6
<b>Purification</b>	Protein A
<b>Buffer</b>	0.2 µm filtered solution in PBS

### Applications

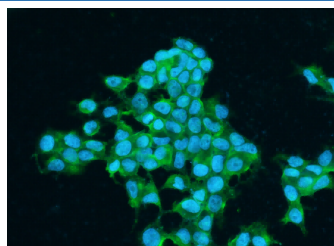
### Recommended Dilution

<b>ICC/IF</b>	1:20-1:100
<b>FCM</b>	1:25-1:100

### Data



Flow cytometric analysis of human IGF1R expression on HeLa cells. Cells were stained with purified anti-Human IGF1R, then a FITC-conjugated second step antibody. The histogram were derived from events with the forward and side light-scatter characteristics of intact cells.



Immunofluorescence analysis of Human IGF1R in MCF7 cells. Cells were fixed with 4% PFA, blocked with 10% serum, and incubated with Rabbit anti-Human IGF1R Monoclonal Antibody (1:60) at 37°C 1 hour. Then cells were stained with the Alexa Fluor® 488-conjugated Goat Anti-rabbit IgG secondary antibody (green). Positive staining was localized to cell membrane.

### Preparation & Storage

<b>Storage</b>	This antibody can be stored at 2°C-8°C for one month without detectable loss of activity. Antibody products are stable for twelve months from date of receipt when stored at -20°C to -80°C. Preservative-Free. Avoid repeated freeze-thaw cycles.
<b>Shipping</b>	Ice bag

### Background

This receptor binds insulin-like growth factor with a high affinity. It has tyrosine kinase activity. The insulin-like growth factor I receptor plays a critical role in transformation events. Cleavage of the precursor generates alpha and beta subunits. It is highly overexpressed in most malignant tissues where it functions as an anti-apoptotic agent by enhancing cell survival. Alternatively spliced transcript variants encoding distinct isoforms have been found for this gene.

### For Research Use Only