

# Recombinant Human FAM3C Protein (His Tag)

Catalog Number:PKSH032962



**Note:** Centrifuge before opening to ensure complete recovery of vial contents.

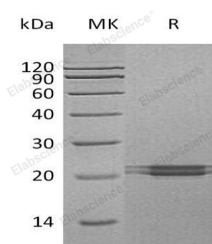
## Description

<b>Synonyms</b>	Protein FAM3C;Interleukin-Like EMT Inducer;FAM3C;ILEI
<b>Species</b>	Human
<b>Expression Host</b>	HEK293 Cells
<b>Sequence</b>	Gln25-Asp227
<b>Accession</b>	Q92520
<b>Calculated Molecular Weight</b>	23.2 kDa
<b>Observed molecular weight</b>	20-25 kDa
<b>Tag</b>	C-His

## Properties

<b>Purity</b>	> 95 % as determined by reducing SDS-PAGE.
<b>Endotoxin</b>	< 1.0 EU per µg of the protein as determined by the LAL method.
<b>Storage</b>	Generally, lyophilized proteins are stable for up to 12 months when stored at -20 to -80°C. Reconstituted protein solution can be stored at 4-8°C for 2-7 days. Aliquots of reconstituted samples are stable at < -20°C for 3 months.
<b>Shipping</b>	This product is provided as lyophilized powder which is shipped with ice packs.
<b>Formulation</b>	Lyophilized from a 0.2 µm filtered solution of 20mM PB, 150mM NaCl, pH 7.2. Normally 5 % - 8 % trehalose, mannitol and 0.01% Tween80 are added as protectants before lyophilization. Please refer to the specific buffer information in the printed man
<b>Reconstitution</b>	Please refer to the printed manual for detailed information.

## Data



> 95 % as determined by reducing SDS-PAGE.

## Background

FAM3C, also called interleukin-like EMT inducer, usually exist in most secretory epithelia. It belongs to the FAM3 family according to their sequence similarities. The up-regulation and/or mislocalization in breast cancer and liver carcinoma cells of FAM3C is strongly correlated with metastasis formation and survival. FAM3C can be involved in retinal laminar formation and promote epithelial to mesenchymal transition.

## For Research Use Only

A Reliable Research Partner in Life Science and Medicine

Toll-free: 1-888-852-8623

Web: [www.elabscience.com](http://www.elabscience.com)

Tel: 1-832-243-6086

Email: [techsupport@elabscience.com](mailto:techsupport@elabscience.com)

Fax: 1-832-243-6017