

Recombinant Human UBE2D1 Protein (His Tag)

Catalog Number: PKSH031122



Note: Centrifuge before opening to ensure complete recovery of vial contents.

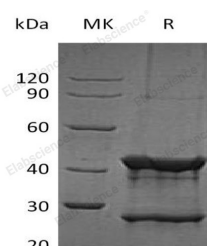
Description

Synonyms	Ubiquitin-conjugating enzyme E2 D1; Stimulator of Fe transport; SFT; UBC4/5 homolog; UbcH5; Ubiquitin carrier protein D1; Ubiquitin-conjugating enzyme E2(17)KB 1; Ubiquitin-conjugating enzyme E2-17 kDa 1; Ubiquitin-protein ligase D1; SFT; UBC5A; UBCH5; UBCH5A
Species	Human
Expression Host	E.coli
Sequence	Ala 2-Met 147
Accession	P51668
Calculated Molecular Weight	18.3 kDa
Tag	N-His

Properties

Purity	> 90 % as determined by reducing SDS-PAGE.
Endotoxin	Please contact us for more information.
Storage	Generally, lyophilized proteins are stable for up to 12 months when stored at -20 to -80°C. Reconstituted protein solution can be stored at 4-8°C for 2-7 days. Aliquots of reconstituted samples are stable at < -20°C for 3 months.
Shipping	This product is provided as lyophilized powder which is shipped with ice packs.
Formulation	Lyophilized from sterile 25mM Tris, 100mM NaCl, 20% glycerol, 0.05% Tween Normally 5 % - 8 % trehalose, mannitol and 0.01% Tween80 are added as protectants before lyophilization. Please refer to the specific buffer information in the printed manu
Reconstitution	Please refer to the printed manual for detailed information.

Data



> 90 % as determined by reducing SDS-PAGE.

Background

Ubiquitin-conjugating enzyme E2 D1 (UBE2D1); a member of human E2 ubiquitin-conjugating enzymes; is closely related to SFT; which is short for stimulator of iron (Fe) transport. In other words; UbcH5A is significantly up-regulated in the liver of iron-overloaded patients with hereditary hemochromatosis; as previously published for SFT. Moreover; a complex of UBE2D1 is critical in maintaining KRAS protein stability and propose that targeting such complex may be a unique strategy to degrade mutant KRAS to kill cancer cells.

For Research Use Only

A Reliable Research Partner in Life Science and Medicine

Toll-free: 1-888-852-8623

Web: www.elabscience.com

Tel: 1-832-243-6086

Email: techsupport@elabscience.com

Fax: 1-832-243-6017