

## Anti-Human CD3-FITC/CD4-PE/CD45-PerCP-Cyanine5.5 Cocktail

Catalog Number: E-AB-FC0003

**Note:** Centrifuge before opening to ensure complete recovery of vial contents.

### Description

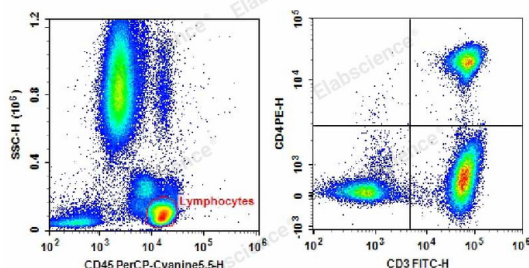
|                                |   |
|--------------------------------|---|
| <b>Reactivity</b>              | Human   |
| <b>Clone No.</b>               | OKT-3;RPA-T4;HI30   |
| <b>Conjugation</b>             | FITC;PE;PerCP/Cyanine 5.5   |
| <b>Conjugation Information</b> | FITC is designed to be excited by the Blue laser (488 nm) and detected using an optical filter centered near 530 nm (e.g., a 525/40 nm bandpass filter). PE is designed to be excited by the Blue (488 nm), Green (532 nm) and Yellow-Green (561 nm) lasers and detected using an optical filter centered near 575 nm (e.g., a 585/42 nm bandpass filter). PerCP/Cyanine5.5 is designed to be excited by the blue laser (488 nm) and detected using an optical filter centered near 675 nm (e.g., a 690/50 nm bandpass filter). |
| <b>Storage Buffer</b>          | Phosphate buffered solution, pH 7.2, containing 0.09% stabilizer and 1% protein protectant.   |

### Applications

### Recommended usage

|            |   |
|------------|---|
| <b>FCM</b> | For whole blood samples, add 5 $\mu$ L Anti-Human CD3-FITC/CD4-PE/CD45-PerCP-Cyanine5.5 Cocktail to 100 $\mu$ L anticoagulant-treated blood sample. Mix and incubate the sample at 4°C in the dark for 30 min. Remove red blood cells with RBC lysis solution following the manufacturer's instruction. Wash the cell with cell staining buffer and discard the supernatant after centrifugation at 300 g for 5 min. Resuspend the cells with 200 $\mu$ L cell staining buffer and load the sample on flow cytometer for detection. For other samples, $1 \times 10^6$ dissociated single cells are centrifuged at 300 g for 5 min with the supernatant discarded. Resuspend the cells with 100 $\mu$ L cell staining buffer and add 5 $\mu$ L Anti-Human CD3-FITC/CD4-PE/CD45-PerCP-Cyanine5.5 Cocktail. Mix and incubate the sample at 4°C in the dark for 30 min. Add cell staining buffer to each tube, centrifuge at 300 g for 5 min and discard the supernatant. Resuspend the cells with 200 $\mu$ L cell staining buffer and load the sample on flow cytometer for detection. |
|------------|---|

### Data



Human peripheral blood lymphocytes are stained with Anti-Human CD3-FITC/CD4-PE/CD45-PerCP-Cyanine5.5.

### Preparation & Storage

|                |   |
|----------------|---|
| <b>Storage</b> | Keep as concentrated solution.<br>This product can be stored at 2-8°C for 12 months. Please protected from prolonged exposure to light and do not freeze. |
|----------------|---|

### For Research Use Only

Shipping

Ice bag

## Antigen Information

### Background

This product is a FCM antibody cocktail made up of FITC Anti-Human CD3 Antibody [Clone: OKT-3] (Mouse IgG2a,  $\kappa$ ), PE Anti-Human CD4 Antibody [Clone: RPA-T4] (Mouse IgG1,  $\kappa$ ) and PerCP/Cyanine5.5 Anti-Human CD45 Antibody [Clone: HI30] (Mouse IgG1,  $\kappa$ );

CD3 is a heterotetrameric protein consisting of a CD3 $\gamma$ , a CD3 $\delta$  and 2 CD3 $\epsilon$ . It forms complex with TCR. OKT-3 recognize human CD3 $\epsilon$ . Human CD3 is expressed on the surface of T cells and NKT cells.;

CD4 is also called Leu-3 or T4. It's a single-chain type I transmembrane glycoprotein, mainly expressed on the surface of T cells, and monocytes/macrophages. In T cells, CD4 forms complex with TCR/CD3 and play important roles in T cell immunity. The target of HIV is CD4+ T cells. Reduction of CD4+ T cells is the main reason of defected immunity after HIV infection.;

CD45 is a single-chain type I transmembrane glycoprotein. Except for erythrocytes and platelets, CD45 is expressed on nearly all of the hematopoietic cells with high level. It is a common marker for blood leukocytes. CD45 is a receptor type protein tyrosine phosphatase and plays essential roles in B cell and T cells signaling.

## For Research Use Only