

## AF/LE Purified Anti-Human CD4 Antibody[RPA-T4]

**catalog number:** E-AB-F11090

**Note:** Centrifuge before opening to ensure complete recovery of vial contents.

### Description

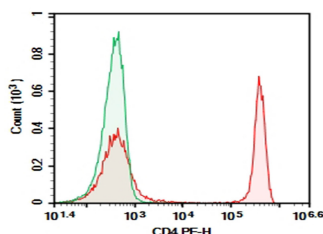
<b>Reactivity</b>	Human
<b>Immunogen</b>	Recombinant Human CD4 protein
<b>Host</b>	Mouse
<b>Isotype</b>	Mouse IgG1, $\kappa$
<b>Clone</b>	RPA-T4
<b>Purification</b>	>98%, Protein A/G purified
<b>Conjugation</b>	None (AF/LE)
<b>Buffer</b>	Sterile PBS, pH 7.2. < 1.0 EU per mg of the antibody as determined by the LAL method

### Applications

### Recommended Dilution

<b>FCM</b>	2 $\mu\text{g/mL}$ ( $1 \times 10^5$ - $5 \times 10^5$ cells)
------------	---

### Data



Human peripheral blood lymphocytes were stained with 0.2  $\mu\text{g}$  AF/LE Purified Anti-Human CD4 Antibody[RPA-T4] (Right) and 0.2  $\mu\text{g}$  Mouse IgG1,  $\kappa$  Isotype Control (Left), followed by PE-conjugated Goat Anti-Mouse IgG Secondary Antibody.

### Preparation & Storage

<b>Storage</b>	Store at 4°C valid for 12 months or -20°C valid for long term storage, avoid freeze / thaw cycles. This preparation contains no preservatives, thus it should be handled under aseptic conditions.
<b>Shipping</b>	Ice bag

### Background

CD4, also known as T4/Leu-3, is a 55 kD single-chain type I transmembrane glycoprotein and member of the immunoglobulin superfamily. It is expressed on most thymocytes, helper T cells, type II NKT cells, and monocytes/macrophages. CD4 is part of the TCR/CD3 complex, binds to  $\beta 2$  domain from the MHC class II molecule, and participates in TCR signal transduction. CD4 is the receptor of IL-16 and is a coreceptor for the human immunodeficiency virus (HIV) and human herpes virus 7 (HHV-7).

### For Research Use Only