

PE Anti-Mouse CD28 Antibody[37.51]

Catalog Number: E-AB-F1026UD

Note: Centrifuge before opening to ensure complete recovery of vial contents.

Description

Reactivity	Mouse
Host	Syrian Hamster
Isotype	Syrian Hamster IgG
Clone No.	37.51
Isotype Control	PE Syrian Hamster IgG Isotype Control[SHG-1] [Product E-AB-F09763D]
Conjugation	PE
Conjugation Information	PE is designed to be excited by the Blue (488 nm), Green (532 nm) and Yellow-Green (561 nm) lasers and detected using an optical filter centered near 575 nm (e.g., a 585/42 nm bandpass filter).
Storage Buffer	Phosphate buffered solution, pH 7.2, containing 0.09% sodium azide and 1% BSA.

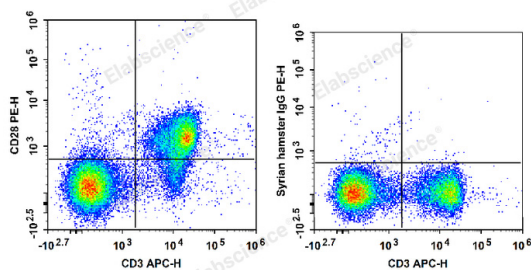
Applications

Recommended usage

FCM

Each lot of this antibody is quality control tested by flow cytometric analysis. Please check your vial before the experiment. Since applications vary, the appropriate dilutions must be determined for individual use. We suggest each investigator should titrate the reagent to obtain optimal results [The recommended concentration is 0.1-1 $\mu\text{g}/10^6$ cells in 100 μL volume].

Data



C57BL/6 murine splenocytes are stained with APC Anti-Mouse CD3 Antibody and PE Anti-Mouse CD28 Antibody (Left). Splenocytes are stained with APC Anti-Mouse CD3 Antibody and PE Syrian Hamster IgG Isotype Control (Right).

Preparation & Storage

Storage	Keep as concentrated solution. This product can be stored at 2-8°C for 12 months. Please protected from prolonged exposure to light and do not freeze.
Shipping	Ice bag

Antigen Information

Alternate Names	CD28;Cd28;T-cell-specific surface glycoprotein CD28
Uniprot ID	P31041
Gene ID	12487

For Research Use Only

Background

CD28 is a 44 kD glycoprotein, also known as Tp44 or T44. It is a member of the Ig superfamily, expressed on thymocytes, most peripheral T cells, and NK cells. In association with CD80 (B7-1) and CD86 (B7-2), CD28 acts as the second signal for T and NK cell activation and proliferation. The 37.51 antibody has been reported to augment in vitro T cell proliferation and cytokine production, and promote CTL development.