

# ZBTB7A Polyclonal Antibody

catalog number: E-AB-53231

**Note:** Centrifuge before opening to ensure complete recovery of vial contents.

## Description

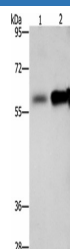
<b>Reactivity</b>	Human;Mouse;Rat
<b>Immunogen</b>	Synthetic peptide of human ZBTB7A
<b>Host</b>	Rabbit
<b>Isotype</b>	IgG
<b>Purification</b>	Antigen affinity purification
<b>Conjugation</b>	Unconjugated
<b>buffer</b>	Phosphate buffered solution, pH 7.4, containing 0.05% stabilizer and 50% glycerol.

## Applications

## Recommended Dilution

<b>WB</b>	1:500-1:2000
-----------	--------------

## Data



Western blot analysis of Hepg2 cells NIH/3T3 cells using  
ZBTB7A Polyclonal Antibody at dilution of 1:500

**Observed-MV:Refer to figures**

**Calculated-MV:61 kDa**

## Preparation & Storage

<b>Storage</b>	Store at -20°C Valid for 12 months. Avoid freeze / thaw cycles.
<b>Shipping</b>	The product is shipped with ice pack,upon receipt,store it immediately at the temperature recommended.

## Background

LRF, formerly identified as Pokemon, is a poxvirus zinc finger (POZ) domain-containing transcription factor that influences cell differentiation.LRF (for leukemia/lymphoma related factor) is also known as zinc finger and BTB domain containing 7A, ZBTB7, TIP21, FBI1 and FBI-1.POZ-domain transcription factors contain a POZ or BTB type protein-protein interaction domain at their N-terminus and Kruppel-type zinc fingers at their C-terminus.LRF is inducible during both murine and human preadipocyte differentiation and may contribute to adipogenesis through influencing the switch from cellular proliferation to terminal differentiation.

## For Research Use Only