

## Purified Anti-Human CD226 Antibody[11A8]

catalog number: E-AB-F1369A

**Note:** Centrifuge before opening to ensure complete recovery of vial contents.

### Description

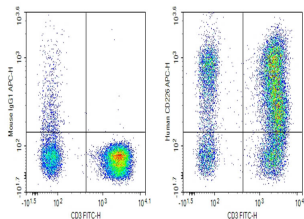
<b>Reactivity</b>	Human
<b>Immunogen</b>	Recombinant Human CD226 protein
<b>Host</b>	Mouse
<b>Isotype</b>	Mouse IgG1, κ
<b>Clone</b>	11A8
<b>Purification</b>	>98%, Protein A/G purified
<b>Buffer</b>	Phosphate-buffered solution, pH 7.2, containing 0.05% non-protein stabilizer. Dialyze to completely remove the stabilizer prior to labeling.

### Applications

### Recommended Dilution

<b>FCM</b>	2 µg/mL (0.5×10 <sup>6</sup> -1×10 <sup>6</sup> cells)
------------	--

### Data



Verified Samples in FCM: Human peripheral blood lymphocytes

### Preparation & Storage

<b>Storage</b>	Store at 4°C valid for 12 months or -20°C valid for long term storage, avoid freeze / thaw cycles.
<b>Shipping</b>	Ice bag

### Background

DNAM-1 (CD226) is a ~65 kD glycoprotein expressed on cell surface of T cells, NK cells, monocytes/macrophages, platelets and megakaryocytes and a subset of B cells and a member of the immunoglobulin (Ig)-superfamily containing 2 Ig-like domains of the V-set. The ligands for CD226 are the poliovirus receptor (CD155) and its family member nectin-2 (CD112), which are broadly expressed on epithelial, endothelial and neuronal cells. CD226 is physically associated with LFA-1 in NK cells and activated T cells, and involved in LFA-1-mediated signaling.

### For Research Use Only