

# ROM1 Polyclonal Antibody

catalog number: E-AB-18687

**Note:** Centrifuge before opening to ensure complete recovery of vial contents.

## Description

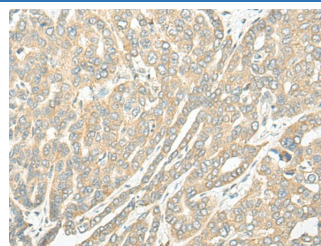
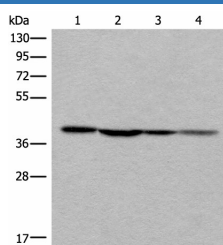
<b>Reactivity</b>	Human;Mouse
<b>Immunogen</b>	Fusion protein of human ROM1
<b>Host</b>	Rabbit
<b>Isotype</b>	IgG
<b>Purification</b>	Antigen affinity purification
<b>Conjugation</b>	Unconjugated
<b>buffer</b>	Phosphate buffered solution, pH 7.4, containing 0.05% stabilizer and 50% glycerol.

## Applications

## Recommended Dilution

<b>WB</b>	1:500-1:2000
<b>IHC</b>	1:30-1:150

## Data



Western blot analysis of 293T 231 and Hela cell lysates using ROM1 Polyclonal Antibody at dilution of 1:400

Immunohistochemistry of paraffin-embedded Human liver cancer tissue using ROM1 Polyclonal Antibody at dilution of 1:25(×200)

**Observed-MV:Refer to figures**

**Calculated-MV:37 kDa**

## Preparation & Storage

<b>Storage</b>	Store at -20°C Valid for 12 months. Avoid freeze / thaw cycles.
<b>Shipping</b>	The product is shipped with ice pack,upon receipt,store it immediately at the temperature recommended.

## Background

This gene is a member of a photoreceptor-specific gene family and encodes an integral membrane protein found in the photoreceptor disk rim of the eye. This protein can form homodimers or can heterodimerize with another photoreceptor, retinal degeneration slow (RDS). It is essential for disk morphogenesis, and may also function as an adhesion molecule involved in the stabilization and compaction of outer segment disks or in the maintenance of the curvature of the rim. Certain defects in this gene have been associated with the degenerative eye disease retinitis pigmentosa.

## For Research Use Only