

Recombinant Human/Rhesus HER4/ErbB4 Protein (His Tag)



Catalog Number:PKSH031648

Note: Centrifuge before opening to ensure complete recovery of vial contents.

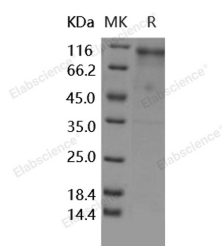
Description

Synonyms	Receptor tyrosine-protein kinase erbB-4;Proto-oncogene-like protein c-ErbB-4;Tyrosine kinase-type cell surface receptor HER4;p180erbB4;ERBB4;HER4
Species	Human
Expression Host	HEK293 Cells
Sequence	Met 1-Arg649
Accession	NP_005226.1
Calculated Molecular Weight	71.1 kDa
Observed molecular weight	102 kDa
Tag	C-His
Bioactivity	Immobilized human ErbB4-His at 10 µg/ml (100 µl/well) can bind biotinylated human NRG1 , The EC50 of biotinylated human NRG1 is 0.4-0.92 µg/ml.

Properties

Purity	> 85 % as determined by reducing SDS-PAGE.
Endotoxin	< 1.0 EU per µg of the protein as determined by the LAL method.
Storage	Generally, lyophilized proteins are stable for up to 12 months when stored at -20 to -80°C. Reconstituted protein solution can be stored at 4-8°C for 2-7 days. Aliquots of reconstituted samples are stable at < -20°C for 3 months.
Shipping	This product is provided as lyophilized powder which is shipped with ice packs.
Formulation	Lyophilized from sterile PBS, pH7.4 Normally 5 % - 8 % trehalose, mannitol and 0.01% Tween80 are added as protectants before lyophilization. Please refer to the specific buffer information in the printed manual.
Reconstitution	Please refer to the printed manual for detailed information.

Data



> 85 % as determined by reducing SDS-PAGE.

Background

ERBB4 is a single-pass type I membrane protein with multiple cysteine rich domains; a transmembrane domain; a tyrosine kinase domain; a phosphatidylinositol-3 kinase binding site and a PDZ domain binding motif. ERBB4 is expressed at highest levels in brain; heart; kidney; in addition to skeletal muscle; parathyroid; cerebellum; pituitary; spleen; testis and breast. And lower levels in thymus; lung; salivary gland; and pancreas. It specifically binds to and is activated by neuregulins; NRG-2; NRG-3; heparin-binding EGF-like growth factor; betacellulin and NTAK. ERBB4 also can be

For Research Use Only

A Reliable Research Partner in Life Science and Medicine

Toll-free: 1-888-852-8623

Web: www.elabscience.com

Tel: 1-832-243-6086

Email: techsupport@elabscience.com

Fax: 1-832-243-6017

Recombinant Human/Rhesus HER4/ErbB4 Protein (His Tag)



Catalog Number: PKSH031648

activated by other factors and induces a variety of cellular responses including mitogenesis and differentiation. ERBB4 regulates development of the heart; the central nervous system and the mammary gland; gene transcription; cell proliferation; differentiation; migration and apoptosis. It is required for normal cardiac muscle differentiation during embryonic development; and for postnatal cardiomyocyte proliferation. ERBB4 also play a role on the normal development of the embryonic central nervous system; especially for normal neural crest cell migration and normal axon guidance. It is required for mammary gland differentiation; induction of milk proteins and lactation.

For Research Use Only

A Reliable Research Partner in Life Science and Medicine

Toll-free: 1-888-852-8623

Web: www.elabscience.com

Tel: 1-832-243-6086

Email: techsupport@elabscience.com

Fax: 1-832-243-6017