

Elab Fluor® 488 Anti-Human CD36 Antibody[5-271]

Catalog Number: E-AB-F1164L

Note: Centrifuge before opening to ensure complete recovery of vial contents.

Description

Reactivity	Human
Host	Mouse
Isotype	Mouse IgG2a, κ
Clone No.	5-271
Isotype Control	Elab Fluor® 488 Mouse IgG2a, κ Isotype Control[C1.18.4] [Product E-AB-F09802L]
Conjugation	Elab Fluor® 488
Conjugation Information	Elab Fluor® 488 is designed to be excited by the Blue laser (488 nm) and detected using an optical filter centered near 520 nm (e.g., a 525/40 nm bandpass filter).
Storage Buffer	Phosphate buffered solution, pH 7.2, containing 0.09% sodium azide and 1% BSA.

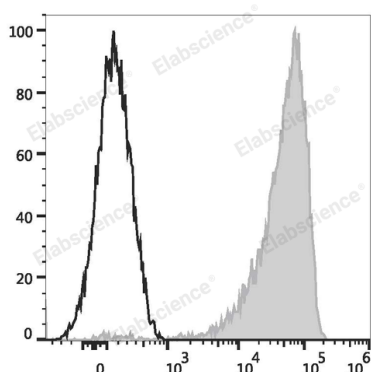
Applications

Recommended usage

FCM

Each lot of this antibody is quality control tested by flow cytometric analysis. **The amount of the reagent is suggested to be used 5 μL of antibody per test (million cells in 100 μL staining volume or per 100 μL of whole blood).** Please check your vial before the experiment. Since applications vary, the appropriate dilutions must be determined for individual use.

Data



Human peripheral blood platelets are stained with Elab Fluor® 488 Anti-Human CD36 Antibody (filled gray histogram) or Elab Fluor® 488 Mouse IgG2a, κ Isotype Control (empty black histogram).

Preparation & Storage

Storage	Keep as concentrated solution. This product can be stored at 2-8°C for 12 months. Please protected from prolonged exposure to light and do not freeze.
Shipping	Ice bag

Antigen Information

Alternate Names	GP3B;GP4;GPIIIB;GPIV;PAS-4
Uniprot ID	P16671
Gene ID	948

For Research Use Only

Background

CD36 is an 85 kD integral membrane glycoprotein, also known as GPIIb, or GPIV. It is expressed on various epithelial and endothelial cells as well as erythrocytes, platelets, macrophages/monocytes and some macrophage-derived dendritic cells. CD36 functions as a scavenger receptor, binding thrombospondin, long chain fatty acids, oxidized LDL, collagen type I, IV, and V as well as apoptotic cells. The 5-271 antibody has been reported to be useful for flow cytometry.