

PSMD6 Polyclonal Antibody

catalog number: E-AB-16043

Note: Centrifuge before opening to ensure complete recovery of vial contents.

Description

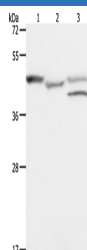
Reactivity	Human;Mouse
Immunogen	Synthetic peptide of human PSMD6
Host	Rabbit
Isotype	IgG
Purification	Affinity purification
Conjugation	Unconjugated
buffer	Phosphate buffered solution, pH 7.4, containing 0.05% stabilizer and 50% glycerol.

Applications

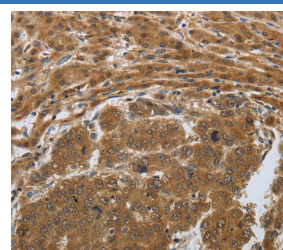
Recommended Dilution

WB	1:500-1:2000
IHC	1:50-1:200

Data

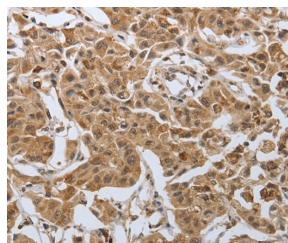


Western Blot analysis of K562 cell and Mouse heart tissue, MCF7 cell using PSMD6 Polyclonal Antibody at dilution of 1:900



Immunohistochemistry of paraffin-embedded Human liver cancer using PSMD6 Polyclonal Antibody at dilution of 1:50

Calculated-MV :49/46 kDa



Immunohistochemistry of paraffin-embedded Human lung cancer using PSMD6 Polyclonal Antibody at dilution of 1:50

Preparation & Storage

Storage	Store at -20°C Valid for 12 months. Avoid freeze / thaw cycles.
Shipping	The product is shipped with ice pack, upon receipt, store it immediately at the temperature recommended.

Background

This gene encodes a member of the protease subunit S10 family. The encoded protein is a subunit of the 26S proteasome which colocalizes with DNA damage foci and is involved in the ATP-dependent degradation of ubiquitinated proteins. Alternative splicing results in multiple transcript variants.

For Research Use Only