

# Recombinant Human CDK5 Protein (GST Tag)

Catalog Number:PKSH031366



**Note:** Centrifuge before opening to ensure complete recovery of vial contents.

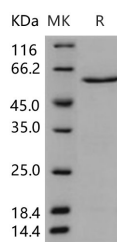
## Description

<b>Synonyms</b>	PSSALRE
<b>Species</b>	Human
<b>Expression Host</b>	Baculovirus-Insect Cells
<b>Sequence</b>	Met 1-Pro 292
<b>Accession</b>	NP_004926.1
<b>Calculated Molecular Weight</b>	59.6 kDa
<b>Observed molecular weight</b>	59.6 kDa
<b>Tag</b>	N-GST

## Properties

<b>Purity</b>	> 94 % as determined by reducing SDS-PAGE.
<b>Endotoxin</b>	< 1.0 EU per µg of the protein as determined by the LAL method.
<b>Storage</b>	Generally, lyophilized proteins are stable for up to 12 months when stored at -20 to -80°C. Reconstituted protein solution can be stored at 4-8°C for 2-7 days. Aliquots of reconstituted samples are stable at < -20°C for 3 months.
<b>Shipping</b>	This product is provided as lyophilized powder which is shipped with ice packs.
<b>Formulation</b>	Lyophilized from sterile PBS, 0.5mM GSH, pH 7.0 Normally 5 % - 8 % trehalose, mannitol and 0.01% Tween80 are added as protectants before lyophilization. Please refer to the specific buffer information in the printed manual.
<b>Reconstitution</b>	Please refer to the printed manual for detailed information.

## Data



> 94 % as determined by reducing SDS-PAGE.

## Background

Cell division protein kinase 5, also known as Cyclin-dependent kinase 5, Serine/threonine-protein kinase PSSALRE, Tau protein kinase II catalytic subunit, TPKII catalytic subunit and CDK5, is a cytoplasm protein which belongs to the protein kinase superfamily, CMGC Ser/Thr protein kinase family and CDC2 / CDKX subfamily. Cyclin-dependent kinases (Cdks) are a family of proline-directed Ser/Thr kinases known for their role in the control of cell cycle progression. In 1992, this family was joined by CDK5, which is an atypical member in that it uses its own activators and is multifunctional, playing important regulatory roles in multiple cellular functions. CDK5, unlike other Cdks, is not regulated by cyclins, and its activity is primarily detected in postmitotic neurons in developing and adult nervous systems. CDK5 is activated by association with a neuron-specific activator, p35 or its isoform p39. CDK5 is probably involved in

## For Research Use Only

A Reliable Research Partner in Life Science and Medicine

Toll-free: 1-888-852-8623

Web: [www.elabscience.com](http://www.elabscience.com)

Tel: 1-832-243-6086

Email: [techsupport@elabscience.com](mailto:techsupport@elabscience.com)

Fax: 1-832-243-6017

# Recombinant Human CDK5 Protein (GST Tag)

Catalog Number:PKSH031366



the control of the cell cycle. It interacts with D1 and D3-type G1 cyclins. CDK5 can phosphorylate histone H1, tau, MAP2 and NF-H and NF-M. It also interacts with p35 which activates the kinase. CDK5 plays important roles in various neuronal activities, including neuronal migration, synaptic activity, and neuronal cell death.

---

## For Research Use Only

A Reliable Research Partner in Life Science and Medicine

Toll-free: 1-888-852-8623

Tel: 1-832-243-6086

Fax: 1-832-243-6017

Web: [www.elabscience.com](http://www.elabscience.com)

Email: [techsupport@elabscience.com](mailto:techsupport@elabscience.com)