

## PE Anti-Mouse CD8a Antibody[53-6.7]

Catalog Number: E-AB-F1104UD

**Note:** Centrifuge before opening to ensure complete recovery of vial contents.

### Description

<b>Reactivity</b>	Mouse
<b>Host</b>	Rat
<b>Isotype</b>	Rat IgG2a, κ
<b>Clone No.</b>	53-6.7
<b>Isotype Control</b>	PE Rat IgG2a, κ Isotype Control[2A3] [Product E-AB-F09833D]
<b>Conjugation</b>	PE
<b>Conjugation Information</b>	PE is designed to be excited by the Blue (488 nm), Green (532 nm) and Yellow-Green (561 nm) lasers and detected using an optical filter centered near 575 nm (e.g., a 585/42 nm bandpass filter).
<b>Storage Buffer</b>	Phosphate buffered solution, pH 7.2, containing 0.09% sodium azide and 1% BSA.

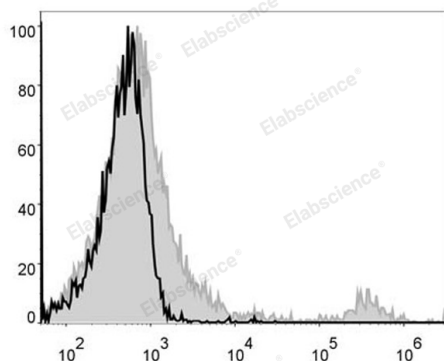
### Applications

### Recommended usage

#### FCM

Each lot of this antibody is quality control tested by flow cytometric analysis. Please check your vial before the experiment. Since applications vary, the appropriate dilutions must be determined for individual use. We suggest each investigator should titrate the reagent to obtain optimal results [The recommended concentration is 0.1-1 μg/10<sup>6</sup> cells in 100 μL volume].

### Data



C57BL/6 murine splenocytes are stained with PE Anti-Mouse CD8a Antibody (filled gray histogram). Unstained splenocytes (empty black histogram) are used as control.

### Preparation & Storage

<b>Storage</b>	Keep as concentrated solution. This product can be stored at 2-8°C for 12 months. Please protected from prolonged exposure to light and do not freeze.
<b>Shipping</b>	Ice bag

### Antigen Information

<b>Alternate Names</b>	CD8A;MAL;T-cell surface glycoprotein CD8 alpha chain;T-lymphocyte differentiation antigen T8/Leu-2
<b>Uniprot ID</b>	P01731
<b>Gene ID</b>	12525

### For Research Use Only

## Background

CD8, also known as Lyt-2, Ly-2, or T8, consists of disulfide-linked  $\alpha$  and  $\beta$  chains that form the  $\alpha$ (CD8a)/ $\beta$ (CD8b) heterodimer and  $\alpha/\alpha$  homodimer. CD8a is a 34 kD protein that belongs to the immunoglobulin family. The CD8  $\alpha/\beta$  heterodimer is expressed on the surface of most thymocytes and a subset of mature TCR  $\alpha/\beta$  T cells. CD8 expression on mature T cells is non-overlapping with CD4. The CD8  $\alpha/\alpha$  homodimer is expressed on a subset of  $\gamma/\delta$  TCR-bearing T cells, NK cells, intestinal intraepithelial lymphocytes, and lymphoid dendritic cells. CD8 is an antigen co-receptor on T cells that interacts with MHC class I on antigen-presenting cells or epithelial cells. CD8 promotes T cell activation through its association with the TCR complex and protein tyrosine kinase lck.