

Recombinant CHOP Monoclonal Antibody

catalog number: **AN300931L**

Note: Centrifuge before opening to ensure complete recovery of vial contents.

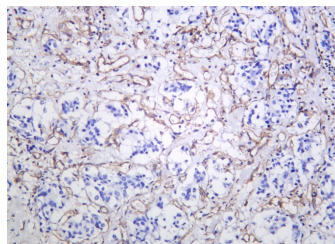
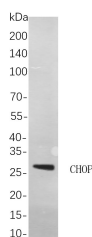
Description

Reactivity	Human;Mouse;Rat
Immunogen	Recombinant Human CHOP protein
Host	Rabbit
Isotype	IgG, κ
Clone	B878
Purification	Protein A
Buffer	PBS, 50% glycerol, 0.05% Proclin 300, 0.05% protein protectant.

Applications

Applications	Recommended Dilution
IHC	1:100-1:400
WB	1:1000-1:5000
IF	1:200-1:1000
ELISA	1:5000-1:20000

Data



Western Blot with Recombinant CHOP Monoclonal Antibody at dilution of 1:1000. Lane A: C6 cells. Immunohistochemistry of paraffin-embedded human breast carcinoma using Recombinant CHOP Monoclonal Antibody at dilution of 1:200.

Observed-MW:30 kDa
Calculated-MW:19 kDa

Preparation & Storage

Storage	Store at -20°C Valid for 12 months. Avoid freeze / thaw cycles.
Shipping	Ice bag

Background

This gene encodes a member of the CCAAT/enhancer-binding protein (C/EBP) family of transcription factors. The protein functions as a dominant-negative inhibitor by forming heterodimers with other C/EBP members, such as C/EBP and LAP (liver activator protein), and preventing their DNA binding activity. The protein is implicated in adipogenesis and erythropoiesis, is activated by endoplasmic reticulum stress, and promotes apoptosis. Fusion of this gene and FUS on chromosome 16 or EWSR1 on chromosome 22 induced by translocation generates chimeric proteins in myxoid liposarcomas or Ewing sarcoma. Multiple alternatively spliced transcript variants encoding two isoforms with different length have been identified.

For Research Use Only

Toll-free: 1-888-852-8623
Web: www.elabscience.com

Tel: 1-832-243-6086
Email: techsupport@elabscience.com

Fax: 1-832-243-6017

Rev. V1.2