

Recombinant Mouse Leptin Receptor/LEPR/CD295 (C-mFc)



Catalog Number: PKSM041412

Note: Centrifuge before opening to ensure complete recovery of vial contents.

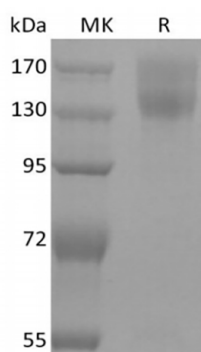
Description

| | |
|---------------------|----------------------------|
| Species | Mouse |
| Mol_Mass | 118.5 kDa |
| Accession | P48356 |
| Bio-activity | Not validated for activity |

Properties

| | |
|-----------------------|--|
| Purity | > 95 % as determined by reducing SDS-PAGE. |
| Endotoxin | < 1.0 EU per µg of the protein as determined by the LAL method. |
| Storage | Generally, lyophilized proteins are stable for up to 12 months when stored at -20 to -80 °C. Reconstituted protein solution can be stored at 4-8°C for 2-7 days. Aliquots of reconstituted samples are stable at < -20°C for 3 months. |
| Shipping | This product is provided as lyophilized powder which is shipped with ice packs. |
| Formulation | Lyophilized from a 0.2 µm filtered solution of PBS, pH 7.4. Normally 5% - 8% trehalose, mannitol and 0.01% Tween 80 are added as protectants before lyophilization. Please refer to the specific buffer information in the printed manual. |
| Reconstitution | Please refer to the printed manual for detailed information. |

Data



> 95 % as determined by reducing SDS-PAGE.

Background

The Leptin receptor is a member of the Class I cytokine receptor family. It mediates the activities of Leptin, a multi-functional hormone produced primarily by adipose tissues that plays roles in food intake, energy metabolism, angiogenesis, reproduction, hematopoiesis, bone metabolism, and immune function. The human Leptin R gene encodes 1165 amino acids (aa) including a signal peptide, an extracellular region with cytokine receptor homology (CRH), multiple fibronectin type III domains and a WSXWS motif, a transmembrane domain, and a cytoplasmic domain that supports JAK/STAT signaling. Soluble Leptin R is the primary Leptin-binding protein in blood, where it maintains a pool of available bioactive Leptin, delays Leptin clearance from circulation, and down-regulates blood-brain transmission of Leptin. In humans, soluble Leptin R levels are inversely proportional to adiposity and are elevated in females versus males. Soluble Leptin R is also found up-regulated in patients with chronic heart failure, end-stage renal disease, and anorexia. It is expressed by tumor-initiating stem cells, and is proposed as a link between cancer and obesity.

For Research Use Only