

CTRB1 Polyclonal Antibody

Catalog Number:E-AB-52723



Note: Centrifuge before opening to ensure complete recovery of vial contents.

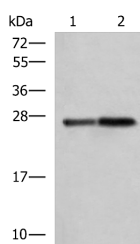
Description

Reactivity	Human, Mouse, Rat
Immunogen	Fusion protein of human CTRB1
Host	Rabbit
Isotype	IgG
Purification	Antigen affinity purification
Conjugation	Unconjugated
Formulation	PBS with 0.05% NaN ₃ and 40% Glycerol,pH7.4

Applications Recommended Dilution

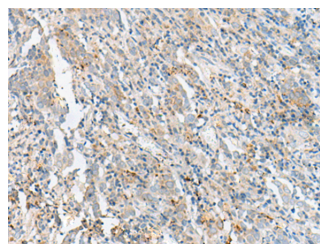
WB	1:1000-1:5000
IHC	1:20-1:100
ELISA	1:5000-1:10000

Data



Western blot analysis of Mouse pancreas tissue and Rat pancreas tissue lysates using CTRB1 Polyclonal Antibody at dilution of 1:1000

Observed Mw:Refer to figures
Calculated Mw:28 kDa



Immunohistochemistry of paraffin-embedded Human cervical cancer tissue using CTRB1 Polyclonal Antibody at dilution of 1:60(×200)

Preparation & Storage

Storage Store at -20°C. Avoid freeze / thaw cycles.

Background

This gene encodes a member of the serine protease family of enzymes and forms a principal precursor of the pancreatic proteolytic enzymes. The encoded preproprotein is synthesized in the acinar cells of the pancreas and secreted into the small intestine where it undergoes proteolytic activation to generate a functional enzyme. This gene is located adjacent to a related chymotrypsinogen gene. This gene encodes distinct isoforms, some or all of which may undergo similar processing to generate the mature protein.

For Research Use Only

A Reliable Research Partner in Life Science and Medicine

Toll-free: 1-888-852-8623

Web: www.elabscience.com

Tel: 1-832-243-6086

Email: techsupport@elabscience.com

Fax: 1-832-243-6017