

C1QBP/HABP1 Monoclonal Antibody

catalog number: **AN200043P**

Note: Centrifuge before opening to ensure complete recovery of vial contents.

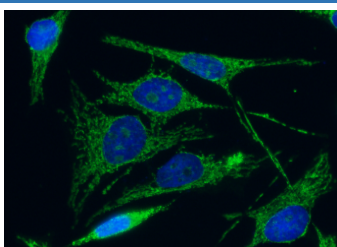
Description

Reactivity	Human
Immunogen	Recombinant Human C1QBP / HABP1 protein
Host	Mouse
Isotype	IgG2b
Clone	11A9
Purification	Protein A
Buffer	0.2 µm filtered solution in PBS

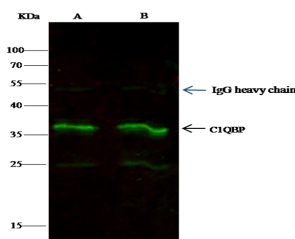
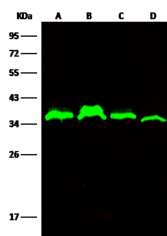
Applications

Applications	Recommended Dilution
WB	1:500-1:2000
ICC/IF	1:20-1:100
IP	1-4 µL/mg of lysate

Data



Immunofluorescence analysis of Human C1QBP in HeLa cells. Cells were fixed with 4% PFA, permeabilized with 0.5% Triton X-100 in PBS, blocked with 10% serum, and incubated with Mouse anti-Human C1QBP Monoclonal Antibody (1:60) at 37°C 1 hour. Then cells were stained with the Alexa Fluor® 488-conjugated Goat Anti-mouse IgG secondary antibody (green) and counterstained with DAPI for nuclear staining (blue). Positive staining was localized to cytoplasm.

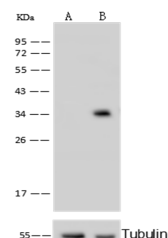


Immunoprecipitation analysis using 2 µL anti-C1QBP mouse Monoclonal Antibody and 15 µL of 50 % Protein G agarose.

Western blot was performed from the immunoprecipitate using C1QBP mouse Monoclonal Antibody at a dilution of 1:100. Lane A: 0.5 mg HeLa Whole Cell Lysate, Lane B: 0.5 mg HepG2 Whole Cell Lysate

Observed-MW: 35 kDa

Calculated-MW: 31 kDa



For Research Use Only

Toll-free: 1-888-852-8623
Web: www.elabscience.com

Tel: 1-832-243-6086
Email: techsupport@elabscience.com

Fax: 1-832-243-6017

Rev. V1.1

Western Blot with C1QBP / HABP1 Monoclonal Antibody at dilution of 1:500. Lane A: Hela Whole Cell Lysate, Lane B: 293T Whole Cell Lysate, Lane C: Jurkat Whole Cell Lysate, Lane D: NIH/3T3 Whole Cell Lysate, Lysates/proteins at 30 µg per lane.

Observed-MW:35 kDa

Calculated-MW:31 kDa

Western Blot with C1QBP / HABP1 Monoclonal Antibody at dilution of 1:500. Lane A: C1QBP konckout Hela Whole Cell Lysate, Lane B: Hela Whole Cell Lysate, Lysates/proteins at 10 µg per lane.

Observed-MW:35 kDa

Calculated-MW:31 kDa

Preparation & Storage

Storage

This antibody can be stored at 2°C-8°C for one month without detectable loss of activity. Antibody products are stable for twelve months from date of receipt when stored at -20°C to -80°C. Preservative-Free. Avoid repeated freeze-thaw cycles.

Shipping

Ice bag

Background

The human complement subcomponent C1q associates with C1r and C1s in order to yield the first component of the serum complement system. The protein encoded by this gene is known to bind to the globular heads of C1q molecules and inhibit C1 activation. This protein has also been identified as the p32 subunit of pre-mRNA splicing factor SF1, as well as a hyaluronic acid-binding protein.

For Research Use Only

Toll-free: 1-888-852-8623
Web: www.elabscience.com

Tel: 1-832-243-6086
Email: techsupport@elabscience.com

Fax: 1-832-243-6017

Rev. V1.1