

ENO2 Monoclonal Antibody

Catalog Number: E-AB-22029



Note: Centrifuge before opening to ensure complete recovery of vial contents.

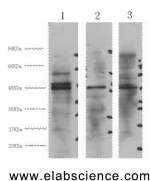
Description

Reactivity	Human, Mouse, Rat
Immunogen	Synthetic Peptide
Host	Mouse
Isotype	IgG
Clone	Clone: 2K3
Purification	Protein A purification
Conjugation	Unconjugated
Formulation	PBS with 0.02% sodium azide and 50% glycerol pH 7.4.

Applications Recommended Dilution

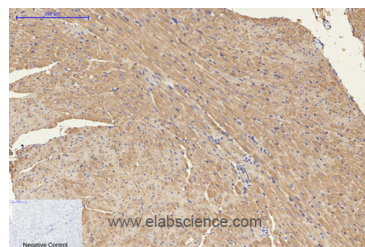
WB	1:500-1:3000
IHC	1:100-1:300
IF	1:100-1:300

Data

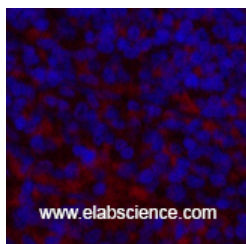


Western Blot analysis of 1) HeLa, 2) Jurkat, 3) 293T cells using ENO2 Monoclonal Antibody at dilution of 1:3000.

Observed MW: 47kDa
Calculated Mw: 47kDa



Immunohistochemistry of paraffin-embedded Mouse heart tissue using ENO2 Monoclonal Antibody at dilution of 1:200.



Immunofluorescence analysis of Mouse spleen tissue using ENO2 Monoclonal Antibody at dilution of 1:200.

Preparation & Storage

Storage Store at -20°C. Avoid freeze / thaw cycles.

For Research Use Only

A Reliable Research Partner in Life Science and Medicine

Toll-free: 1-888-852-8623

Web: www.elabscience.com

Tel: 1-832-243-6086

Email: techsupport@elabscience.com

Fax: 1-832-243-6017

ENO2 Monoclonal Antibody

Catalog Number: E-AB-22029



Background

Has neurotrophic and neuroprotective properties on a broad spectrum of central nervous system (CNS) neurons. Binds, in a calcium-dependent manner, to cultured neocortical neurons and promotes cell survival

For Research Use Only

A Reliable Research Partner in Life Science and Medicine

Toll-free: 1-888-852-8623

Tel: 1-832-243-6086

Fax: 1-832-243-6017

Web: www.elabscience.com

Email: techsupport@elabscience.com