

# VCAM1 Polyclonal Antibody

Catalog Number:E-AB-70284



**Note:** Centrifuge before opening to ensure complete recovery of vial contents.

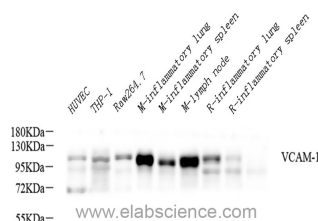
## Description

<b>Reactivity</b>	Human,Mouse,Rat
<b>Immunogen</b>	Recombinant protein corresponding to Mouse VCAM-1
<b>Host</b>	Rabbit
<b>Isotype</b>	IgG
<b>Purification</b>	Affinity purification
<b>Conjugation</b>	Unconjugated
<b>Formulation</b>	PBS with 0.02% sodium azide, 1% protective protein and 50% glycerol, pH7.4

## Applications Recommended Dilution

<b>WB</b>	1:500-1:2000
-----------	--------------

## Data



Western Blot analysis of various samples using VCAM1 Polyclonal Antibody at dilution of 1:600.

**Observed MW:100-110kDa**

**Calculated Mw:100-110kDa**

## Preparation & Storage

**Storage** Store at -20°C. Avoid freeze / thaw cycles.

## Background

Vascular cell adhesion molecule 1 (VCAM1),also known as CD106,is a transmembrane glycoprotein belonging to the immunoglobulin gene superfamily. VCAM1 is expressed by cytokine-activated endothelium,interacts with integrin VLA4 ( $\alpha 4\beta 1$ ) present on the surface of leukocytes,and mediates both adhesion and signal transduction. It is also expressed either constitutively or inducibly in a variety of other cell types,including vascular smooth muscle cells,differentiating skeletal muscle cells,renal and neural epithelial cells,macrophages (Kupffer cells),dendritic cells,and bone marrow stromal cells .

## For Research Use Only

A Reliable Research Partner in Life Science and Medicine

Toll-free: 1-888-852-8623

Web: [www.elabscience.com](http://www.elabscience.com)

Tel: 1-832-243-6086

Email: [techsupport@elabscience.com](mailto:techsupport@elabscience.com)

Fax: 1-832-243-6017