

## FITC Anti-Human CD185/CXCR5 Antibody[J252D4]

Catalog Number: E-AB-F1287C

**Note:** Centrifuge before opening to ensure complete recovery of vial contents.

### Description

Reactivity	Human
Host	Mouse
Isotype	Mouse IgG1, κ
Clone No.	J252D4
Isotype Control	FITC Mouse IgG1, κ Isotype Control[MOPC-21] [Product E-AB-F09792C]
Conjugation	FITC
Conjugation Information	FITC is designed to be excited by the Blue laser (488 nm) and detected using an optical filter centered near 530 nm (e.g., a 525/40 nm bandpass filter).
Storage Buffer	Phosphate buffered solution, pH 7.2, containing 0.09% stabilizer and 1% protein protectant.

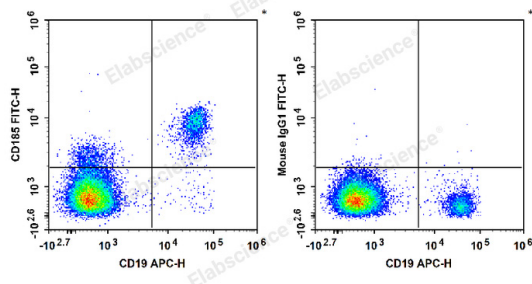
### Applications

### Recommended usage

#### FCM

Each lot of this antibody is quality control tested by flow cytometric analysis. **The amount of the reagent is suggested to be used 5 μL of antibody per test (million cells in 100 μL staining volume or per 100 μL of whole blood).** Please check your vial before the experiment. Since applications vary, the appropriate dilutions must be determined for individual use.

### Data



Human peripheral blood lymphocytes are stained with APC Anti-Human CD19 Antibody and FITC Anti-Human CD185/CXCR5 Antibody (Left). Lymphocytes are stained with APC Anti-Human CD19 Antibody and FITC Mouse IgG1,κ Isotype Control (Right).

### Preparation & Storage

Storage	Keep as concentrated solution. This product can be stored at 2-8°C for 12 months. Please protected from prolonged exposure to light and do not freeze.
Shipping	Ice bag

### Antigen Information

### For Research Use Only

<b>Alternate Names</b>	BLR1;BLR;BLR 1;BLR1;Burkitt lymphoma receptor;Burkitt lymphoma receptor 1;Burkitt lymphoma receptor 1 GTP bind;C-X-C chemokine receptor type;C-X-C chemokine receptor type 5;CD185;CXCR;CXCR5;MDR;MDR15;Monocyte-derived receptor; Monocyte-derived receptor 15
<b>Uniprot ID</b>	P32302
<b>Gene ID</b>	643
<b>Background</b>	CD185, also known as CXCR5, is a 42 kD G-protein coupled receptor with seven transmembrane regions. CXCR5 is expressed by mature B cells, follicular helper T cells, Burkitt's lymphoma cells and a subset of neurons, and mediates cell migration to the B cell follicles in the secondary lymphoid organs. The ligand of CXCR5 is CXCL13 (BLC).

## For Research Use Only