

CCL17 Polyclonal Antibody

catalog number: E-AB-12309

Note: Centrifuge before opening to ensure complete recovery of vial contents.

Description

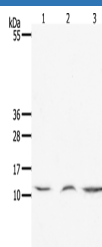
Reactivity	Human;Mouse
Immunogen	Synthetic peptide of human CCL17
Host	Rabbit
Isotype	IgG
Purification	Affinity purification
Conjugation	Unconjugated
buffer	Phosphate buffered solution, pH 7.4, containing 0.05% stabilizer and 50% glycerol.

Applications

Recommended Dilution

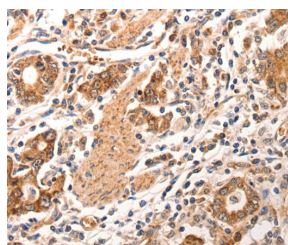
WB	1:500-1:2000
IHC	1:100-1:300

Data

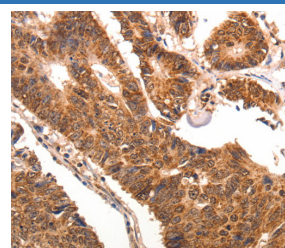


Western Blot analysis of Mouse lung and thymus tissue, Human fetal muscle tissue using CCL17 Polyclonal Antibody at dilution of 1:1300

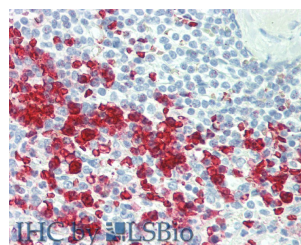
Calculated-MV:11 kDa



Immunohistochemistry of paraffin-embedded Human gastric cancer using CCL17 Polyclonal Antibody at dilution of 1:70



Immunohistochemistry of paraffin-embedded Human colon cancer using CCL17 Polyclonal Antibody at dilution of 1:70



Immunohistochemistry of paraffin-embedded Spleen tissue using CCL17 Polyclonal Antibody at dilution of 1:100 (Elabscience Product Detected by Lifespan).

Preparation & Storage

Storage	Store at -20°C Valid for 12 months. Avoid freeze / thaw cycles.
Shipping	The product is shipped with ice pack, upon receipt, store it immediately at the temperature recommended.

Background

For Research Use Only

CCL17 Polyclonal Antibody

catalog number: E-AB-12309



This gene is one of several Cys-Cys (CC) cytokine genes clustered on the q arm of chromosome 16. Cytokines are a family of secreted proteins involved in immunoregulatory and inflammatory processes. The CC cytokines are proteins characterized by two adjacent cysteines. The cytokine encoded by this gene displays chemotactic activity for T lymphocytes, but not monocytes or granulocytes. The product of this gene binds to chemokine receptors CCR4 and CCR8. This chemokine plays important roles in T cell development in thymus as well as in trafficking and activation of mature T cells.

For Research Use Only

A Reliable Research Partner in Life Science and Medicine
Tel: 400-999-2100

Email: techsupport@elabscience.cn

Web: www.elabscience.cn

Rev. V1.9