

MICU1 Monoclonal Antibody

catalog number: E-AB-22114

Note: Centrifuge before opening to ensure complete recovery of vial contents.

Description

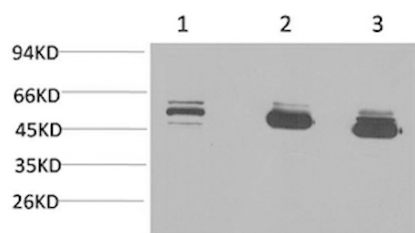
| | |
|---------------------|---|
| Reactivity | Human;Mouse;Rat |
| Immunogen | Recombinant Protein |
| Host | Mouse |
| Isotype | IgG |
| Clone | 4E7 |
| Purification | Protein A purification |
| Conjugation | Unconjugated |
| buffer | Phosphate buffered solution, pH 7.4, containing 0.05% stabilizer, 0.5% protein protectant and 50% glycerol. |

Applications

Recommended Dilution

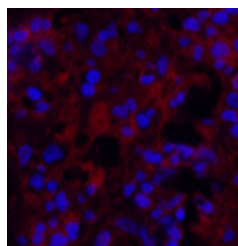
| | |
|------------|--------------|
| WB | 1:500-1:2000 |
| IHC | 1:100-1:200 |
| IF | 1:100-1:300 |

Data

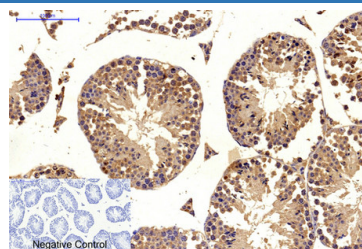


Western Blot analysis of 1) MCF7, 2) Mouse brain, 3) Rat brain with MICU1 Monoclonal Antibody.

Observed-MV:55 kDa



Immunofluorescence analysis of Human appendix tissue using MICU1 Monoclonal Antibody at dilution of 1:200.



Immunohistochemistry of paraffin-embedded Mouse testis tissue using MICU1 Monoclonal Antibody at dilution of 1:200.

Preparation & Storage

| | |
|-----------------|--|
| Storage | Store at -20°C Valid for 12 months. Avoid freeze / thaw cycles. |
| Shipping | The product is shipped with ice pack, upon receipt, store it immediately at the temperature recommended. |

Background

For Research Use Only

MICU1 Monoclonal Antibody

catalog number: E-AB-22114



This gene encodes an essential regulator of mitochondrial Ca²⁺ uptake under basal conditions. The encoded protein interacts with the mitochondrial calcium uniporter, a mitochondrial inner membrane Ca²⁺ channel, and is essential in preventing mitochondrial Ca²⁺ overload, which can cause excessive production of reactive oxygen species and cell stress. Alternatively spliced transcript variants encoding different isoforms have been described.

MICU1 (Mitochondrial Calcium Uptake 1) is a Protein Coding gene. Diseases associated with MICU1 include Myopathy With Extrapyrarnidal Signs and Fish Allergy. Among its related pathways are Ca, cAMP and Lipid Signaling. GO annotations related to this gene include calcium ion binding and protein heterodimerization activity. An important paralog of this gene is MICU3.

For Research Use Only

A Reliable Research Partner in Life Science and Medicine
Tel: 400-999-2100

Email: techsupport@elabscience.cn

Web: www.elabscience.cn

Rev. V1.7