

SLC6A15 Polyclonal Antibody

Catalog Number: E-AB-90166



Note: Centrifuge before opening to ensure complete recovery of vial contents.

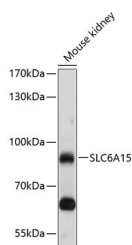
Description

Reactivity	Mouse
Immunogen	Recombinant fusion protein of human SLC6A15
Host	Rabbit
Isotype	IgG
Purification	Affinity purification
Conjugation	Unconjugated
Formulation	PBS with 0.02% sodium azide, 50% glycerol, pH7.3.

Applications Recommended Dilution

WB	1:500-1:2000
-----------	--------------

Data



Western blot analysis of extracts of mouse kidney using SLC6A15 Polyclonal Antibody at 1:1000 dilution.

Observed MW: 82kDa
Calculated Mw: 32kDa/69kDa/81kDa

Preparation & Storage

Storage Store at -20°C. Avoid freeze/thaw cycles.

Background

This gene encodes a member of the solute carrier family 6 protein family which transports neutral amino acids. The encoded protein is thought to play a role in neuronal amino acid transport (PMID: 16185194) and may be associated with major depression (PMID: 21521612). Multiple transcript variants encoding different isoforms have been found for this gene.

For Research Use Only

A Reliable Research Partner in Life Science and Medicine

Toll-free: 1-888-852-8623

Web: www.elabscience.com

Tel: 1-832-243-6086

Email: techsupport@elabscience.com

Fax: 1-832-243-6017