

Recombinant Mouse Sialic acid-binding Ig-like lectin 15/Siglec-15/CD33L3 (C-6His)



Catalog Number:PKSM041394

Note: Centrifuge before opening to ensure complete recovery of vial contents.

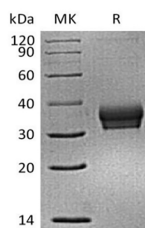
Description

Synonyms	Angiopoietin-related protein 4;425O18-1;Angiopoietin-like protein 4;Fasting-induced adipose factor;Hepatic fibrinogen/angiopoietin-related protein;HFARP;Secreted protein Bk89;Angptl4;Farp;Fiaf;Ng27
Species	Mouse
Expression Host	HEK293 Cells
Sequence	Arg24-Thr262
Accession	A7E1W8
Calculated Molecular Weight	26.5 kDa
Observed molecular weight	30-40 kDa
Tag	C-His
Bioactivity	Loaded Anti-Human Siglec15 mAb-mFc on AMQ Biosensor, can bind Mouse Siglec-15-His with an affinity constant of 0.33 nM as determined in BLI assay.

Properties

Purity	> 95 % as determined by reducing SDS-PAGE.
Endotoxin	< 1.0 EU per µg of the protein as determined by the LAL method.
Storage	Generally, lyophilized proteins are stable for up to 12 months when stored at -20 to -80°C. Reconstituted protein solution can be stored at 4-8°C for 2-7 days. Aliquots of reconstituted samples are stable at < -20°C for 3 months.
Shipping	This product is provided as lyophilized powder which is shipped with ice packs.
Formulation	Lyophilized from a 0.2 µm filtered solution of PBS, 150mM NaCl, 5% Thehalose, 0.3% Chaps, pH 7.4. Normally 5 % - 8 % trehalose, mannitol and 0.01 % Tween80 are added as protectants before lyophilization. Please refer to the specific buffer informat
Reconstitution	Please refer to the printed manual for detailed information.

Data



> 95 % as determined by reducing SDS-PAGE.

Background

Human Siglec-15 is a transmembrane glycoprotein in the Siglec family. Siglecs are type I transmembrane proteins where the NH₃⁺-terminus is in the extracellular space and the COO⁻-terminus is cytosolic. Each Siglec contains an N-terminal V-type immunoglobulin domain (Ig domain) which acts as the binding receptor for sialic acid. These lectins are placed

For Research Use Only

A Reliable Research Partner in Life Science and Medicine

Toll-free: 1-888-852-8623

Tel: 1-832-243-6086

Fax: 1-832-243-6017

Web: www.elabscience.com

Email: techsupport@elabscience.com

Recombinant Mouse Sialic acid-binding Ig-like lectin 15/Siglec-15/CD33L3 (C-6His)



Catalog Number:PKSM041394

into the group of I-type lectins because the lectin domain is an immunoglobulin fold. All Siglecs are extended from the cell surface by C2-type Ig domains which have no binding activity. Siglecs differ in the number of these C2-type domains. Human Siglec-15 consists of a 244 amino acid (aa) extracellular domain (ECD) with two Ig-like domains, a 21 aa transmembrane segment, and a 44 aa cytoplasmic domain. Siglec-15 function is important for osteoclast formation and TRANCE/RANK Ligand signaling in osteoclasts

For Research Use Only

A Reliable Research Partner in Life Science and Medicine

Toll-free: 1-888-852-8623

Tel: 1-832-243-6086

Fax: 1-832-243-6017

Web: www.elabscience.com

Email: techsupport@elabscience.com